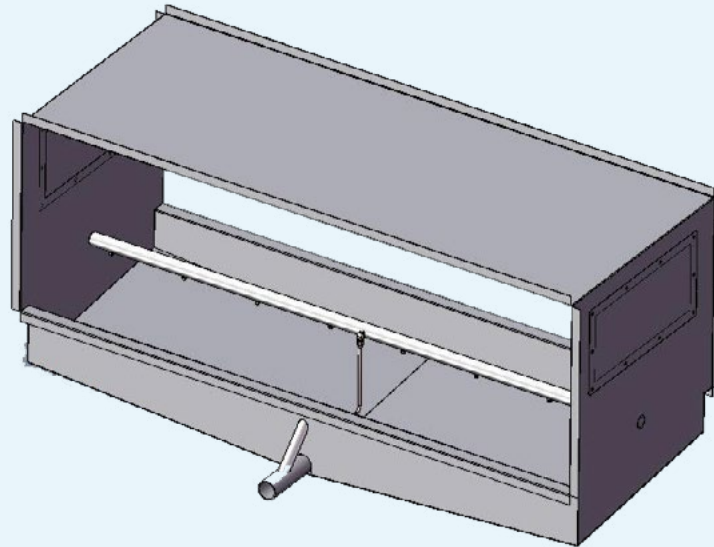


# HDS

## Halton Duct Sump



### General Description

The Halton Duct Sump is constructed of 16 gauge stainless steel with all corners and seams continuously welded. It is equipped with a spray manifold, drain with pre-flush and overflow, and a removable access panel. The panel is removed without the use of tools and meets all requirements of NFPA 96. 1" flanges are provided at the inlet and outlet collars for welding to the duct system. Each duct sump is 24" long and is custom build to match the duct size required.

Typically, the Halton Duct Sump is provided in conjunction with a Halton Water Wash exhaust hood. The wash manifold of the duct sump would be interconnected to the hot water line coming from the exhaust hood control panel and therefore, the sump would be washed daily with hot detergent injected water simultaneously with the exhaust hood. An average wash cycle is 5 minutes. If the project is not utilizing a Halton Water Wash hood, the a Halton control panel, Model H5-25 must be provided. Refer to H5-25 control panel specification sheet for details.

### Application:

The Halton Duct Sump is designed to be installed at the low point(s) of long horizontal duct runs to collect and drain off moisture, liquefied grease etc.

### Model Number:

The model number is determined by the size of sump. Specify the model number as follows.

Sump shall be a Halton HDS\_\_\_\_\_W x \_\_\_\_\_H x 24"L.

### General Specification:

The Duct Sump shall be a Halton HDS\_\_\_\_\_x \_\_\_\_\_x 24"L.

The Duct Sump shall be constructed of 16 gauge stainless steel and shall include 1" flanges at the inlet and outlet collars for welding to the duct system. All corners and seams shall be continuously welded.

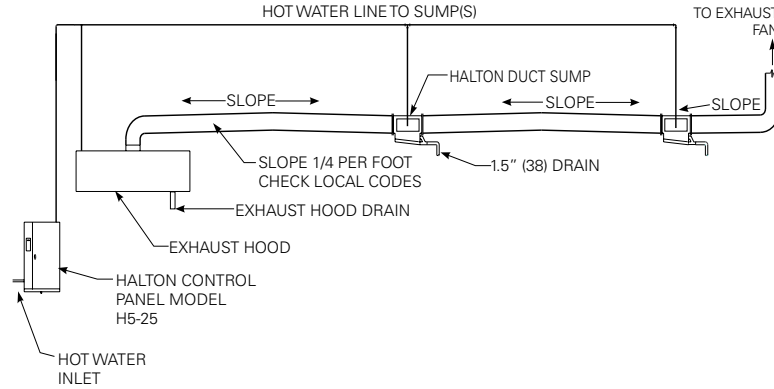
The Duct Sump shall include a stainless steel spray manifold with brass spray nozzles, a 1-1/2" drain with pre-flush and overflow. If the sump is larger than 36" wide, there shall be an access panel on each side. The access panel shall meet all requirements of NFPA 96. The sump shall be interconnected with the water wash exhaust hood control panel cabinet and wash simultaneously with the exhaust hood.

Note: If the system does not include a water wash exhaust hood, a control cabinet must be specified)

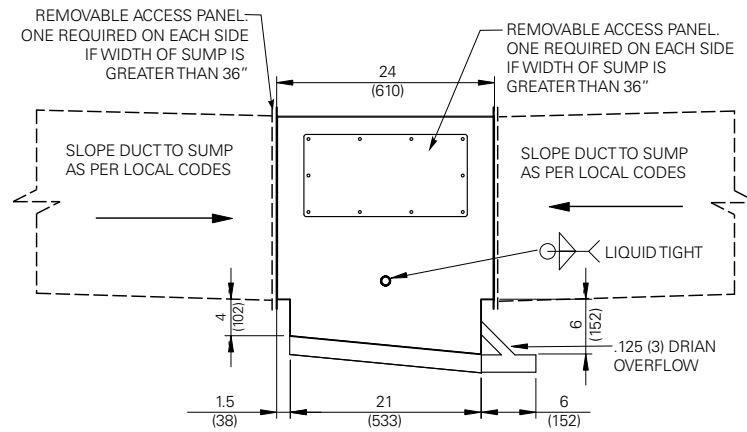
### Water Requirements:

1. Hot water temp at control panel 120°F MIN. - 140° F MAX.
2. Water pressure at control panel 40 PSI MIN. - 80 PSI MAX.
3. Water consumption 1.5 GPM at 40 PSI for every 12" of width

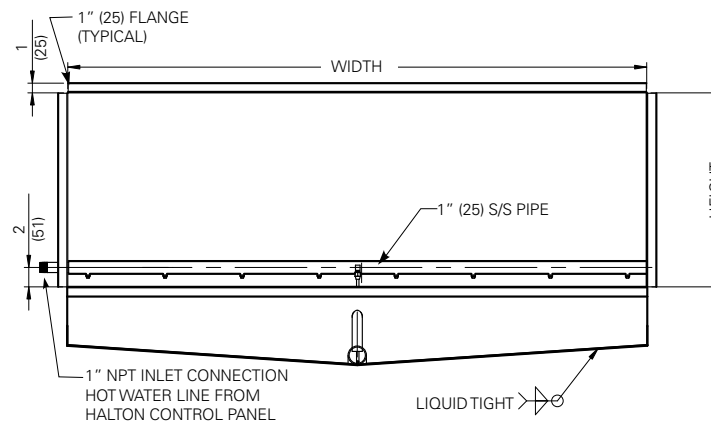
## TYPICAL DUCT SUMP ARRANGEMENT



## SIDE VIEW



## END VIEW



The company has a policy of continuous product development, therefore we reserve the right to modify design and specifications without notice.

For more information, please contact your nearest Halton agency. To find it: [www.haltoncompany.com](http://www.haltoncompany.com)