

Project book



Full gallery



FlipBook



Enabling Wellbeing

Halton

The background is a solid blue color with various abstract geometric patterns. In the upper left, there are curved, parallel lines. In the upper right, there are concentric circles and a grid of small squares. In the lower left, there is a network diagram with nodes and connecting lines. In the lower right, there are more concentric circles and a grid of small squares. The text "Project Book" is centered in the middle of the image.

Project Book



Halton

About us

Editorial	1
Halton Group	2
Halton Foodservice	4
Since our last Project Book	6
Halton Innovation Hubs	10
Halton Foodservice in the World	12

References

Australia	Brisbane Racing Club	107
Austria	Austria Campus	164
	Josh die Gastwirtschaft	157
Belgium	Axa	14
	Kasserol	155
Brazil	Albert Einstein Hospital	115
Canada	Ancora	95
China	Casa Mia	147
	HIK9	103
	Nanjing Institute of Tourism and Hospitality	72
	Stone Sal	152
Czech Republic	Červený Jelen	116
	ČSOB Prague	100
	Da Pietro	23
Denmark	Scandic Købbyen	166
France	Alléno Paris	96
	Campus de Groisy	18
	CSE Airbus	154
	Luma Tower 7 th Floor	30
	Maison Nouvelle	44
	PavYllon at Pavillon Ledoyen	52
	Pitaya Le Havre	74
	Pitaya Perpignan	75
	Pitaya Toulouse	78
	Steak'n Shake	156
Germany	BMW Group	29
	DB Brick	118
	Dorint Hotel Würzburg	158
	Fachhochschule	106
	Freys	34
	Insurance Company	136
	Knorr-Bremse	54
	Mensa Garching	76
	Nordex Norderstedt	55
	Panoramahotel Oberjoch	88
	Schlosshotel Fleesensee	92
	Waterkant	62
	Wessner Hof	28

Indonesia	Gourmet Garage	86
	Grand Hyatt Jakarta	94
	Parsley	70
	Potato Head Beach Club	64
Italy	Forst Season - Brauerei Forst Bolzano	38
Japan	Heki	80
	Jurin at Keio Plaza Hotel	37
	L'Ecrin	67
	Le Plaisir at Miyako Hotel	66
	Nippondaira Hotel	48
	Ponte Vecchio	42
	Primix	61
	Subaru Corporation	50
	Test Kitchen H	128
Korea (South)	Jeju Dream Tower	91
	Lotte World Tower	98
Macau	Studio City	102
Malaysia	Nobu at Four Seasons Hotel	162
	TGV One Utama Cinema	146
Maldives	The St Regis Maldives Vommuli Resort	119
Monaco	PavYllon at Hermitage Hotel	110
Netherlands (The)	KLM Royal Dutch Airlines	114
	The Kitchen at De Bijenkorf	163
Norway	Re-Naa at Eiler Smith Hotel	26
	Thon Hotel Cecil	160
Philippines (The)	The Grand Kitchen at Grand Hyatt Manila	20
	The Peak	151
	Waterside	90
	Yakumi	71
Poland	Epoka	161
	EN Hotel	113
	Hard Rock Cafe	32
	Hotel Central	142
	Hotel Ferreus	167
	Koneser Grill	145
	Pasibus	132
	Restaurant Giewont	120
	Solna 1	138
Portugal	JN&QUOI at Tivoli Theatre	51
Russia	Daily Chef	130
Singapore	Ginger at Parkroyal on Beach Road	58
	Peppermint at Parkroyal Collection Marina Bay	59
Slovakia	Yeme	40
Spain	Vapiano	47
	Wagamama	46
	L'Atelier Robuchon	111
Sweden	Åstorp Central Kitchen	168
	Hooks Herrgård	150
	Pocket in the House by Pontus Frithiof	134
Taiwan	Le Beaujour	56

Thailand	Chef's Table at Lebua Hotel	16
	Hotel Nikko Bangkok	99
	Le Normandie	35
	Marriott Hotel Sukhumvit	144
Turkey	Istanbul Airport	126
	Nobu at Ritz-Carlton	135
	Ulus 29	140
United Arab Emirates	Shake Shack	141
	Time Out Market	122
	Torno Subito at W Dubai Hotel	22
	Zest at One & Only The Palm	104
United Kingdom	Eataly	108
	Fortnum & Mason	112
	PavYllon at Four Seasons Hotel	36
United States	Casa Tua Cucina	24
	Le Pavillon by Daniel Boulud	124
	Meals on Wheels	60
Vietnam	Backstage	148
	Shilla Monogram	65
	Sora & Umi	41

Over Seas

Aida Cosma	82
Costa Toscana	84
Costa Smeralda	85

Solutions & Building Types

- Airports & Travel Hubs •
- Educational Facilities •
- Food Hall Developments •
- Food Processing Facilities •
- Ghost Kitchens •
- Hospitals •
- Hotels, Resorts & Casinos
- Museums
- Music Halls
- Office Buildings
- Restaurants
- Shopping Malls
- Stadiums and Arenas

It has never been as vital to be agile and innovative!

Dear valued customers and partners,

The least we can say is that we all faced challenging times during the past three years. Despite the global pandemic and geopolitical uncertainties, we have been able to strengthen our activity across the globe.

Many lines have moved when it comes to the catering business' segments and the organization of the supply chains. It has never been as vital to be agile and to truly add value to the solutions we offer you. This can only be done through constant innovation, providing the right technologies and services to address your challenges.

One of our direct answers was to develop virus mitigation solutions for restaurants (and other spaces) in a record time during the first lockdown. Another was to speed up the development of Halton Connect, our IoT (Internet of Things) platform.

Today, we continuously monitor over 2000 kitchens worldwide, providing predictive maintenance and system reporting.

Innovation never stops at Halton. We recently introduced Halton SafeGuard, the only holistic system that combines Energy Optimization (M.A.R.V.E.L.), Indoor Environmental Quality (Halton AirWatch), and Safety (Halton FireWatch), all together under one control platform. Halton FireWatch is an intelligent system that detects a potential cooking line fire before the fire suppression system activates, protecting lives and assets!

Halton Safeguard is another breakthrough innovation in the industry.

We put the same dedication, professionalism, expertise, and passion into every project, small and large. We ensure we are involved as early as possible so we can assist from the design phase, and ultimately, we deliver a perfect solution to our customers with all stakeholders involved. Our work does not just stop when our products are installed, and we have commissioned them. We also want to ensure our systems deliver value through their entire life cycle. That's why we further developed our field service capabilities.

We now have over 300 Halton service technicians worldwide serving our customers daily in their kitchen facilities.

We take pride in every project we do. That's why selecting just a few for this project book has been very hard. However, we hope you will enjoy going through these references worldwide in a wide variety of segments, from luxury hotels to hospitals, chain restaurants, corporate staff restaurants, and many more.



Editorial

Director
Halton Foodservice

Georges Gaspar

At Halton, we directly contribute to enabling Sustainable Wellbeing in demanding indoor environments



- We are **passionate** about Indoor Environment Quality (IEQ).
- We constantly **innovate** to be and remain the global technology leader in our targeted business areas.
- We provide our end-users with **safe, comfortable** and **productive** indoor environments that are **energy-efficient** and comply with **sustainable principles**.
- We are engaged with customer projects from the design phase to implementation and use.

Our business areas



Commercial Kitchens & Food Industries



Commercial & Public Buildings



Healthcare

37

Countries around the world

1900+

Skilled Halton professionals

14

Own factories in 10 countries



We strive to continuously improve our customers' and our own impact on the environment and society

E Environment

- We offer energy efficiency solutions and products
- We invest in our factories' energy efficiency
- We provide Environmental Product Declarations to an increasing number of products

S Social

- We offer our personnel hobby opportunities and sponsor local sport teams
- We provide learning opportunities to students and apprenticeships
- We provide better indoor air quality to non-profitable organizations (Halton Foundation)

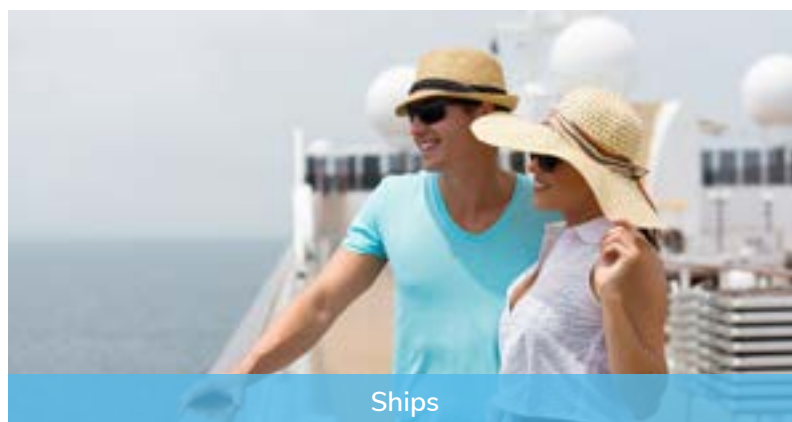
G Governance

- We conduct regular audits of Halton's manufacturing facilities, including the review of environmental, health, safety and corporate responsibility issues
- We observe a Code of Conduct with suppliers and employees
- We're a good corporate citizen and taxpayer



& Cleanrooms

10
R&D units



Ships

2
Manufacturing licences



Energy Production Environments & Infrastructures

270 M€
Turnover in 2022

Halton



At Halton Foodservice, we promote Sustainable Wellbeing in food producing environments

Halton Foodservice has vast experience in all types of cooking processes worldwide, whether for commercial kitchens or food industries. **We have a burning passion for designing innovative solutions and technologies** that directly contribute to people's Wellbeing and have the lowest environmental impact, for the production as such, and for facilities' neighborhood.

Our solutions combine Energy Efficiency, Indoor Environment Quality (IEQ), Safety and Pollution Control, the four cornerstones for contributing to Sustainable Wellbeing in food producing environments.

Innovation as burning passion

139 patents registered

142 patents pending

Widest range of innovative solutions at all steps of the air's route from outside till back to outside

Premium services contributing to the lowest total cost of ownership

5000 new projects a year

2000 kitchens monitored with Halton Connect web user portal (end of 2022)

Highest savings on energy and water

Best balance between the savings and staffs' Wellbeing and productivity

Increasing global presence

10 foodservice factories

2 manufacturing licences

29 countries with own Sales units

10 countries with a sales rep

Premium services contributing to the lowest total cost of ownership

Pre visit
& study

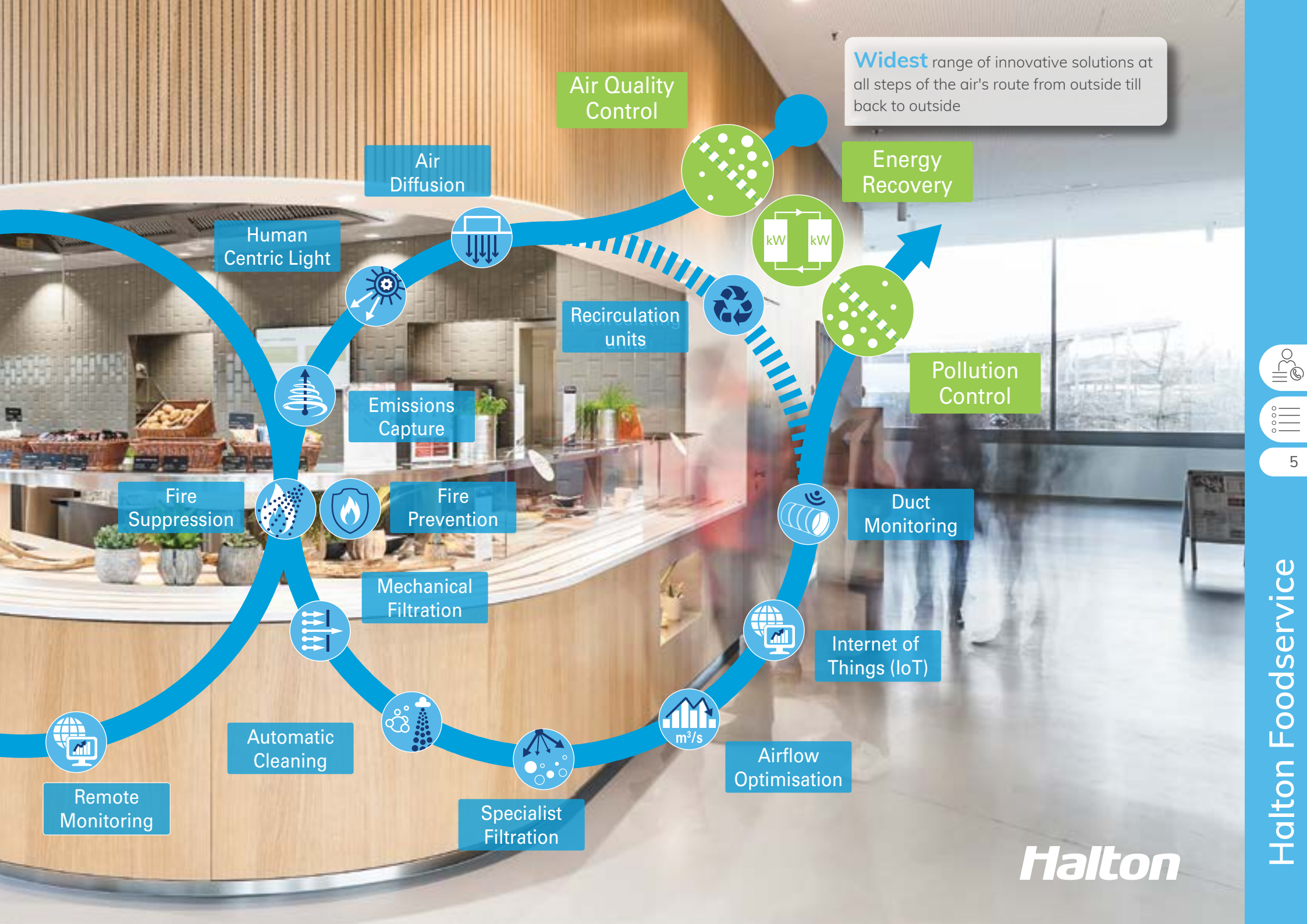
Full HVAC
Design

Installation

Start up

Training
Hand over

Maintenance



Widest range of innovative solutions at all steps of the air's route from outside till back to outside



Halton

We continue innovating in fully connected technologies. 2000+ kitchens are now monitored to Halton Connect web portal and eligible to premium services!

With Halton Connect, get your kitchen(s) at your fingertips

Halton Connect is a state-of-the-art IoT⁽¹⁾ platform whose core is an advanced cloud-based portal. It enables 24/7 remote monitoring of the solutions designed by Halton, allowing access to useful information along with powerful data analytics to the end users. It also provides crucial information to our engineers. In return, they can remotely and safely control all systems and their settings when required.

This digital “two directions” technology opens the way to Premium Services that are vital to keep the performance of the systems and technologies at the initial design level and during all their lifecycle. Even better! They enable continuous optimization of your systems, resulting in even lower operating costs.



Get more information about
Halton Connect & Care



(1) IoT Internet of Things

With Halton Connect & Care, get a direct contribution to the Highest Value of Ownership



Halton Care is a Premium Services offer, supported by our qualified field service teams and partners, whose core is Halton Connect.

Services are often perceived as an expense. And yet, ventilation and indoor environment technologies that are not maintained cost even more!

The fact is that with neglected equipment, the number of issues will definitely increase. Energy use, spare parts need, cleaning costs, hidden and irreversible damage of equipment, sick leaves of the staff, potential complaints from the neighborhood, lost revenue due to down time, hygiene and fire risks etc. In the end, the only thing that inevitably decreases is profitability.

Investment in monitoring and maintenance will increase the value of your business through Halton Connect & Care Premium Services and provide peace of mind.



Get more information about Halton Care for commercial kitchens



Who better than Halton for Halton products!

Our service teams have close relationships with the end users, our R&D engineers as well as our manufacturing and installation teams. This intimacy enables us to continually improve our solutions and technologies to make them more efficient but also user and maintenance-friendly.

Halton Connect & Care contributes to making this improvement process even more systematic and proactive. But these premium services primary benefit is to ensure peace of mind from design phase to operation.

Halton



7

Since our last Project Book

We launched a couple of other innovations that continue making the difference and will equip some of the references for our next project book.

With Halton AirWatch, ensure your energy savings are not made at the expense of the Indoor Environment Quality (IEQ)



Volatile Organic Compounds VOCs
Particulate matter PM1, PM2.5, PM10
Carbon Dioxide CO₂

Temperature
Relative Humidity
Pressure

Halton's AirWatch is an Indoor Environment Quality (IEQ) sensor specifically designed for food producing environments. It monitors not less than 6 factors that are representative to the thermal comfort of the staff and their potential exposure to pollutants.

It can be used as a diagnostic device but its vocation is to be combined with the five times awarded M.A.R.V.E.L. energy optimization technology. It is then truly a question of benefiting from the best balance between the highest energy savings and optimal working conditions and productivity for the staff, through a direct contribution to a premium Indoor Environment Quality.



Get more information about Halton AirWatch

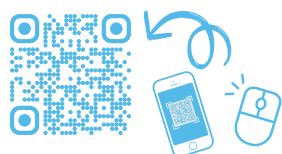




With Halton FireWatch, detect a potential fire before your fire suppression system activates

Halton FireWatch is based on Halton's Thermal Imaging Sensor, which continually monitors the surface temperature of the cooking appliances for abnormalities that are a precursor to a fire event. In such cases, the system alerts the users of conditions that increase the likelihood of a fire and prompt them to act before it breaks out and the fire suppression system triggers.

- Allows for intervention to reduce risk of fire starting
- Mitigates false fire system trips
- Avoid costly shut down and revenue loss from fire system discharge
- Potential for insurance premium reduction
- Monitoring capabilities and Cloud based data for insurance companies

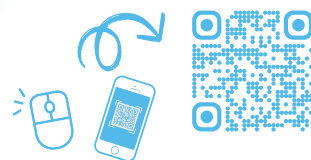


Get more information about Halton FireWatch



Halton ModularChef, a new way of thinking about kitchen ventilation

Halton's low proximity ModularChef hood captures the smoke, grease and steam closest to the cooking appliances. Combined with the Capture Jet™ technology, it reduces the exhaust airflow by up to 40% compared to traditional hoods. It represents a high energy saving potential. It also distinguishes by good ergonomics, openness feeling for the staff and filter cleaning easiness.



Get more information about ModularChef

Halton



Many of the customers in this project book made at least one visit to one of our Innovation Hubs

We designed the Innovation Hubs to exceed your expectations!

Speaking about enabling Sustainable Wellbeing is one thing; demonstrating it and providing you with the opportunity to participate in a hands-on experience to form your opinion regarding your project is another.

At Halton, we recognized the importance of collaborating with our customers by creating 7 Innovation Hubs worldwide dedicated to food producing environments.

We wanted each of them to be a place of discussion and experiences sharing with our customers, our R&D, and our manufacturing teams, with few key objectives:

- Placing your needs at the center of each of your projects;
- Showing you the benefits you can expect from our solutions with as many operational systems as possible or testing means;
- If required, carrying out customized tests of particular cooking processes or specific environments are at stake;
- Providing options to be even above your expectations when possible.



If you believe only what you can experience, request a visit in one of our Innovation Hubs and let's start designing your solution!



Browse the presentation of our Innovation Hubs and fill the form to request a visit.





France - Expertise in advanced and connected ventilation solutions for commercial kitchens

This hub's essence is a fully operational display kitchen equipped with all our innovative technologies, without exception. Enjoy a facility fully oriented to uplifting demonstrations and to an immersive culinary experience!



Germany - Expertise in ventilated ceilings and commercial kitchen ventilation

Nestled in the natural beauty of the Northeast Alps, Reit im Winkl Innovation Hub stands alongside our Manufacturing Center of Excellence in ventilated ceilings, front cooking solutions, and lighting technologies for commercial kitchens.



United Kingdom - Expertise in high efficiency pollution control solutions for commercial kitchens

Rochester's Innovation Hub stands alongside our Manufacturing Center of Excellence in Pollution Control solutions for commercial kitchens. See how to establish your restaurants wherever you choose and where they are of most value.



Malaysia - Expertise in highly efficient kitchen ventilation solutions specific to Asian cooking modes

In cooperation with Halton's China innovation centre, this Hub develops ventilation solutions that address the demands and needs of the Asian cooking modes and their specific cooking appliances.



China - Expertise in highly efficient kitchen ventilation solutions specific to Asian cooking modes

Joining with Malaysia, the Shanghai hub develops ventilation solutions that address the demands and needs of the Asian cooking processes and their specific cooking appliances.

And also...



United States



Canada

Halton



Halton Foodservice presence

Main sales and service centers

- Belgium, Leuven
- Brazil, São Paulo
- Canada, Mississauga
- Chile, Santiago
- China - Shanghai, Shenzhen • Hong Kong, Taipei
- Denmark, Hörning, Taastrup
- Finland, Helsinki
- France, Paris
- Germany, Reit im Winkl
- India, New Dehli
- Indonesia, Jakarta
- Japan, Tokyo
- Kenya, Nairobi
- Korea, Seoul
- Netherlands, Linschoten
- Morocco, Casablanca
- Norway, Oslo
- Philippines, Manila
- Poland, Warsaw
- Russia, Moscow
- Singapore
- Spain, Madrid
- Sweden, Täby, Malmö
- Thailand, Bangkok
- Turkey, Istanbul
- United Arab Emirates, Dubai
- United Kingdom, Rochester
- United States, Scottsville
- Vietnam, Ho Chi Minh

Factories

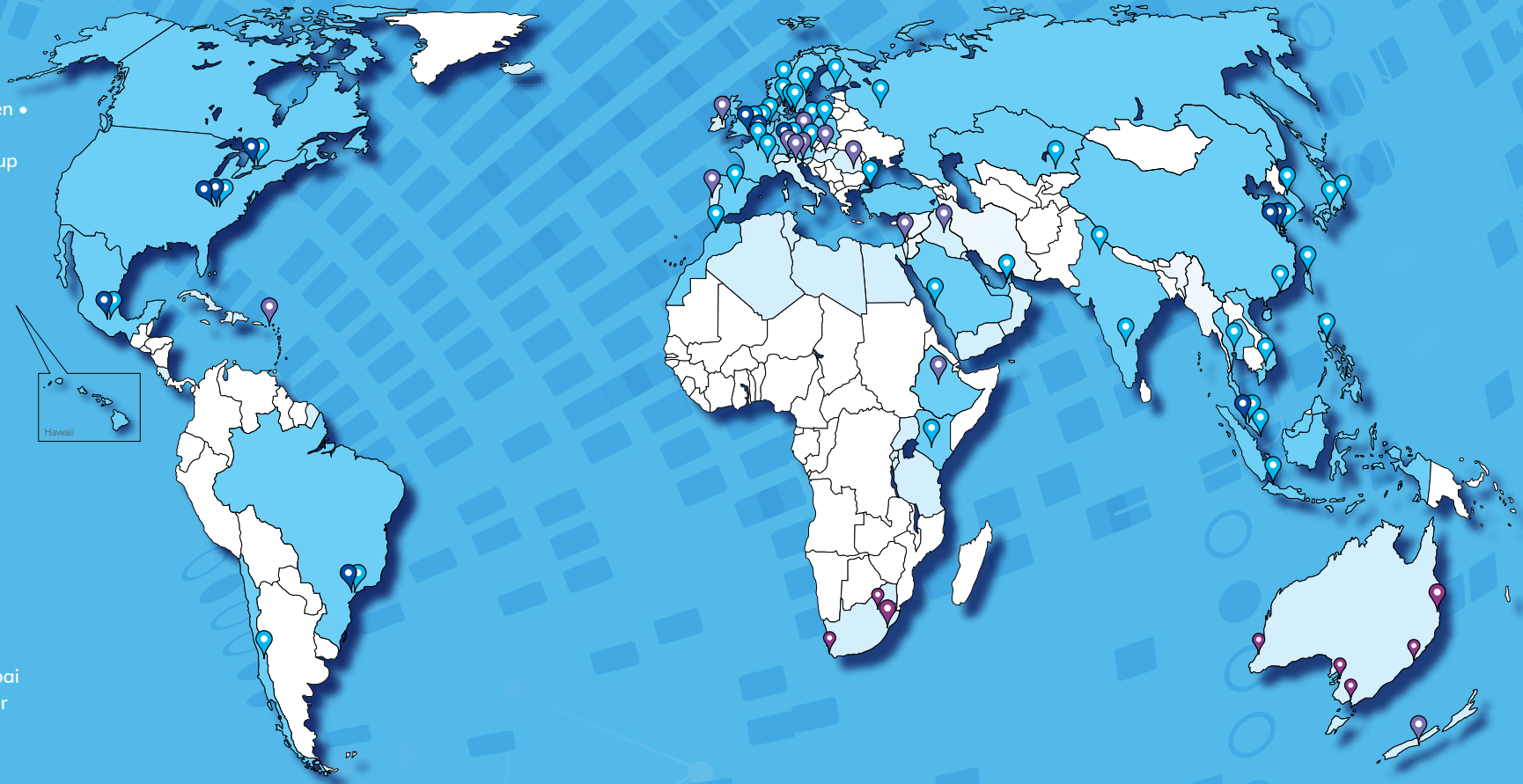
- Brazil, São Paulo
- Canada, Mississauga
- China, Shanghai
- France, Béthune
- Germany, Reit im Winkl
- Malaysia, Port Klang
- Mexico, Mexico
- United Kingdom, Rochester
- United States, Scottsville 1
- United States, Scottsville 2

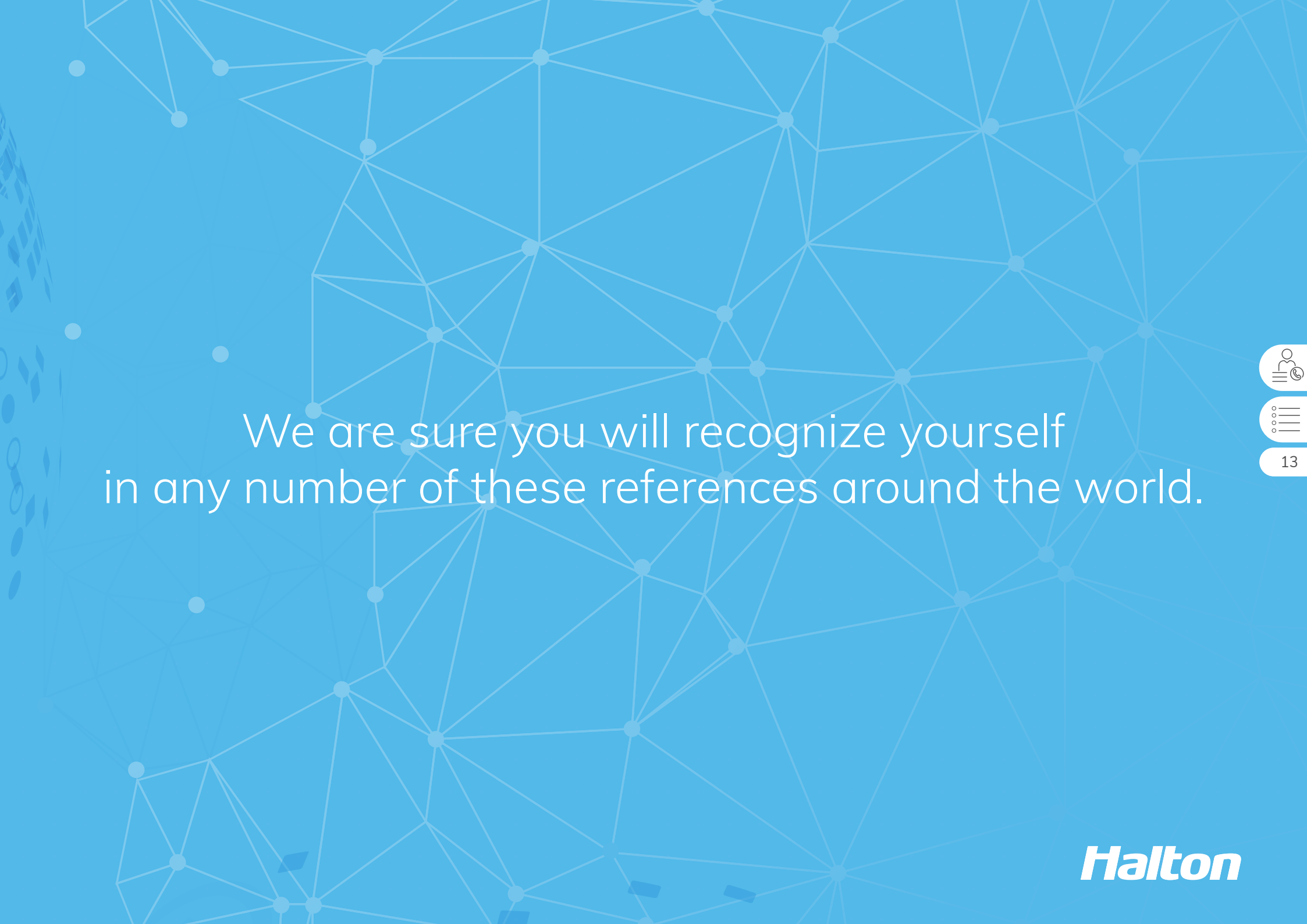
Agents

- Caribbean Islands
- Czech Republic, Prague
- Ethiopia, Addis Ababa
- Hungary, Budapest
- Irak, Bagdad

Manufacturing licences

- Australia, Brisbane
- South Africa, Durban





We are sure you will recognize yourself
in any number of these references around the world.





AXA

BRUSSELS, BELGIUM

- UVF** Capture Ray™ hood with Capture Jet™ technology and integrated makeup air
- UVI** Capture Ray™ hood with Capture Jet™ technology
- CBR** Capture Bar air curtain
- KCW-UV** Water Wash and Capture Ray™ ventilated ceiling with Capture Jet™ technology and low velocity makeup air
- KCV** Ventilated ceiling for dishwashing areas with low velocity makeup air and acoustic panels
- MRV** M.A.R.V.E.L. energy saving technology (smart and self-balanced airflows optimization system with zone control)
- FSS** ANSUL® R-102™ fire suppression system factory pre-installed
- UPT** Unipoint services distribution unit internal services included



16



Chef's Table | Lebua Hotel

BANGKOK, THAILAND

2 Michelin stars



- KCJ-UV** Capture Ray™ ventilated ceiling with Capture Jet™ technology and low velocity makeup air
- PST** PolluStop Exhaust Air Handling Unit with pollution control
- FSS** ANSUL® R-102™ fire suppression system factory pre-installed



17



18



Campus de Groisy

GROISY, FRANCE



- KCJ-UV** Capture Ray™ ventilated ceiling with Capture Jet™ technology and low velocity makeup air
- UVI** Capture Ray™ hood with Capture Jet™ technology
- HCL** Halton Skyline Culinary and Human Centric Light (DALI compatible)
- MRV** M.A.R.V.E.L. energy saving technology (smart and self-balanced airflows optimization system with zone control)



19

Halton



20



The Grand Kitchen | Grand Hyatt

MANILA, THE PHILIPPINES

- UVI** Capture Ray™ hood with Capture Jet™ technology
- CMW-IMOD** Cold Mist On Demand Hood with Capture Jet™ technology
- KMC** Halton MobiChef™ mobile recirculating station with Capture Jet™ technology



21



Halton



Torno Subito | W Dubai Hotel

DUBAI, UNITED ARAB EMIRATES

1 Michelin star

KVF

Capture Jet™ hood with integrated makeup air

MRV

M.A.R.V.E.L. energy saving technology

(smart and self-balanced airflows optimization system with zone control)

Da Pietro

PILSEN, CZECH REPUBLIC

CMW-1 Cold Mist On Demand Hood with Capture Jet™ technology





24



Casa Tua Cucina

MIAMI, FLORIDA, USA

- KVE** Capture Jet™ Commercial Kitchen Hood (ETL)
- KVW** Capture Jet™ island exhaust hood (ETL)
- EO** Exhaust Only hood (UL)
- MRV** M.A.R.V.E.L. energy saving technology (UL)
(smart and self-balanced airflows optimization system with zone control)
- PST-A** Pollution Control Unit (UL)
- FSS** ANSUL® R-102™ fire suppression system factory pre-installed



25





Photos by courtesy of Chef Sven Erik Renaa, his photographer Tom Haga and Norrøna Storkjøkken



Re-Naa

STAVANGER, NORWAY

2 Michelin stars



- CMW-IMOD** Cold Mist On Demand Hood with Capture Jet™ technology
- KVI** Capture Jet™ hood
- HCL** Halton Skyline Culinary and Human Centric Light (DALI compatible)





27



Wessner Hof

MARQUARTSTEIN, GERMANY

- KCJ-UV** Capture Ray™ ventilated ceiling with Capture Jet™ technology and low velocity makeup air
- KCP** Suspended ceiling for neutral areas with integrated light and multiple service options
- HCL** Halton Skyline Culinary and Human Centric Light (DALI compatible)
- KBO** Extraction box for low emission appliances for total or additional makeup air



28

BMW Group

MUNICH, GERMANY

- KCV** Ventilated ceiling for dishwashing areas with low velocity makeup air and acoustic panels
- KCP** Suspended ceiling for neutral areas with integrated light and multiple service options
- KCJ** Capture Jet™ ventilated ceiling with low velocity makeup air
- HCL** Halton Skyline Culinary and Human Centric Light (DALI compatible)
- JES** Jet Extraction System for display cooking areas
- FSS** ANSUL® R-102™ fire suppression system factory pre-installed
- LFU** Ceiling Laminar Flow Unit for total or additional makeup air
- KBO** Extraction box for low emission appliances for total or additional makeup air



29



Pictures by courtesy of Marrone



30



Halton

Luma Tower 7th Floor

ARLES, FRANCE

- KCJ-UV** Capture Ray™ ventilated ceiling with Capture Jet™ technology and low velocity makeup air
- MRV** M.A.R.V.E.L. energy saving technology (smart and self-balanced airflows optimization system with zone control)
- PEU** PolluStop Exhaust Air Handling Unit with pollution control – Eurovent accredited
- HCL** Halton Skyline Culinary and Human Centric Light (DALI compatible)
- FSS** ANSUL® R-102™ fire suppression system factory pre-installed



Pictures by courtesy of Marrone





Hard Rock Cafe

WROCLAW, POLAND

- KVF** Capture Jet™ hood with integrated makeup air
- KVI** Capture Jet™ hood
- HCL** Halton Skyline Culinary and Human Centric Light (DALI compatible)
- KVV** Steam hood for dishwashing areas
- FSS** ANSUL® R-102™ fire suppression system factory pre-installed



33



Freys

CHAM, GERMANY

- KCI** Capture Jet™ ventilated ceiling with low velocity makeup air
- KCV** Ventilated ceiling for dishwashing areas with low velocity makeup air and acoustic panels
- HCL** Halton Skyline Culinary and Human Centric Light (DALI compatible)
- KBO** Extraction box for low emission appliances for total or additional makeup air
- FSS** ANSUL® R-102™ fire suppression system factory pre-installed



Le Normandie | Mandarin Oriental

BANGKOK, THAILAND

2 Michelin stars

UVI

Capture Ray™ hood with Capture Jet™ technology



35



36

Pavyllon | Four Seasons Hotel

LONDON PARK LANE, UNITED KINGDOM

KCJ-UV Capture Ray™ ventilated ceiling with Capture Jet™ technology and low velocity makeup air

HCL Halton Skyline Culinary and Human Centric Light (DALI compatible)

FSS ANSUL® R-102™ fire suppression system factory pre-installed

Photos by courtesy of Sébastien Veronese and Yannick Alléno Group

Jurin | Keio Plaza Hotel

TOKYO, JAPAN

KCW

Water Wash ventilated ceiling with Capture Jet™ technology and low velocity makeup air



Halton





Forst Season | Brauerei Forst Bolzano

BOLZANO, ITALY

KCJ

Capture Jet™ ventilated ceiling with low velocity makeup air

KCP

Suspended ceiling for neutral areas with integrated light and multiple service options

HCL

Halton Skyline Culinary and Human Centric Light (DALI compatible)



39



Yeme

BRATISLAVA, SLOVAKIA

KMC

Halton MobiChef™ mobile recirculating station with Capture Jet™ technology

HCL

Halton Skyline Culinary and Human Centric Light (DALI compatible)



Sora & Umi | InterContinental Long Beach Resort

PHU QUOC, VIETNAM

KVI

Capture Jet™ hood



41

Halton





Ponte Vecchio

OSAKA, JAPAN

KCI

Capture Jet™ ventilated ceiling with low velocity makeup air



43





Maison Nouvelle

BORDEAUX, FRANCE

1 Michelin star

KCJ-UV Capture Ray™ ventilated ceiling with Capture Jet™ technology and low velocity makeup air

UVI Capture Ray™ hood with Capture Jet™ technology

HCL Halton Skyline Culinary and Human Centric Light (DALI compatible)



45

Halton



Wagamama

MADRID, SPAIN

KVF Capture Jet™ hood with integrated makeup air





Vapiano

BARCELONA, SPAIN

KVI

Capture Jet™ hood

Halton



47



48



Nippondaira Hotel

SHIZUOKA, JAPAN

KCI

Capture Jet™ ventilated ceiling with low velocity makeup air



49



Subaru Corporation

TOKYO, JAPAN

KCJ

Capture Jet™ ventilated ceiling with low velocity makeup air





JNêQUOI | Tivoli Theatre

LISBON, PORTUGAL

KVF

Capture Jet™ hood with integrated makeup air



51

Halton



52



Photos by courtesy of Sébastien Veronese and Yannick Alléno Group



PavYllon

PARIS, FRANCE

1 Michelin star

KCJ

Capture Jet™ ventilated ceiling with low velocity makeup air

HCL

Halton Skyline Culinary and Human Centric Light (DALI compatible)

FSS

ANSUL® R-102™ fire suppression system factory pre-installed



53



Halton



Knorr-Bremse

MUNICH, GERMANY

- KCJ-UV** Capture Ray™ ventilated ceiling with Capture Jet™ technology and low velocity makeup air
- KCJ** Capture Jet™ ventilated ceiling with low velocity makeup air
- KCV** Ventilated ceiling for dishwashing areas with low velocity makeup air and acoustic panels
- KCP** Suspended ceiling for neutral areas with integrated light and multiple service options
- HCL** Halton Skyline Culinary and Human Centric Light (DALI compatible)
- JES** Jet Extraction System for display cooking areas
- LPU** Ceiling Laminar Flow Unit for total or additional makeup air
- MRV** M.A.R.V.E.L. energy saving technology (smart and self-balanced airflows optimization system with zone control)
- FSS** ANSUL® R-102™ fire suppression system factory pre-installed





Designed by Profi-tabel Resultants



Nordex Norderstedt

HAMBURG, GERMANY

- KCW-UV** Water Wash and Capture Ray™ ventilated ceiling with Capture Jet™ technology and low velocity makeup air
- KCJ-UV** Capture Ray™ ventilated ceiling with Capture Jet™ technology and low velocity makeup air
- KCJ** Capture Jet™ ventilated ceiling with low velocity makeup air
- KCV** Ventilated ceiling for dishwashing areas with low velocity makeup air and acoustic panels
- KCP** Suspended ceiling for neutral areas with integrated light and multiple service options
- HCL** Halton Skyline Culinary and Human Centric Light (DALI compatible)
- LFU** Ceiling Laminar Flow Unit for total or additional makeup air
- KBO** Extraction box for low emission appliances for total or additional makeup air
- MRV** M.A.R.V.E.L. energy saving technology (smart and self-balanced airflows optimization system with zone control)
- FSS** ANSUL® R-102™ fire suppression system factory pre-installed



55



56



Le Beaujour

TAIPEI, TAIWAN

- KCI** Capture Jet™ ventilated ceiling with low velocity makeup air
- KVI** Capture Jet™ hood
- HCL** Halton Skyline Culinary and Human Centric Light (DALI compatible)
- FSS** ANSUL® R-102™ fire suppression system factory pre-installed



57

Ginger | Parkroyal on Beach Road

SINGAPORE

CMW-IMOD Cold Mist On Demand Hood with Capture Jet™ technology



58



Halton





Peppermint | Parkroyal Collection Marina Bay

SINGAPORE

UVI

Capture Ray™ hood with Capture Jet™ technology



59



Meals on Wheels

SAN FRANCISCO, CALIFORNIA, USA

- KCH** Capture Jet™ condensate hood (ETL)
- KVE** Capture Jet™ Commercial Kitchen Hood (ETL)
- MRV** M.A.R.V.E.L. Demand control ventilation (ETL)
(smart and self-balanced airflows optimization system with zone control)
- FSS** ANSUL® R-102™ fire suppression system factory pre-installed



60



Halton



Primix

HYOGO, JAPAN

- KCW-UV** Water Wash and Capture Ray™ ventilated ceiling with Capture Jet™ technology and low velocity makeup air
- MRV** M.A.R.V.E.L. energy saving technology (smart and self-balanced airflows optimization system with zone control)
- KVV** Steam hood for dishwashing areas



61





Waterkant

HAMBURG, GERMANY

KCW-UV Water Wash and Capture Ray™ ventilated ceiling with Capture Jet™ technology and low velocity makeup air

HCL Halton Skyline Culinary and Human Centric Light (DALI compatible)

FSS ANSUL® R-102™ fire suppression system factory pre-installed

Designed by Profi-tabel Resultants



63



64

Potato Head Beach Club

BALI, INDONESIA

CMW-IMOD

Cold Mist On Demand and Capture Ray™ Hood
with Capture Jet™ technology

Shilla Monogram

DANANG, VIETNAM



- UVI** Capture Ray™ hood with Capture Jet™ technology
- KVV** Steam hood for dishwashing areas
- KCW-UV** Water Wash and Capture Ray™ ventilated ceiling with Capture Jet™ technology and low velocity makeup air
- FSS** ANSUL® R-102™ fire suppression system factory pre-installed



65



Le Plaisir | Miyako Hotel

KYOTO, JAPAN



Jet Extraction System for display cooking areas



66



L'Ecrin

TOKYO, JAPAN

1 Michelin star

KCJ Capture Jet™ ventilated ceiling with low velocity makeup air



67



68



Fendt

MARKTOBERDORF, GERMANY

- KCI-UV** Capture Ray™ ventilated ceiling with Capture Jet™ technology and low velocity makeup air
- KCI** Capture Jet™ ventilated ceiling with low velocity makeup air
- KCV** Ventilated ceiling for dishwashing areas with low velocity makeup air and acoustic panels
- KCP** Suspended ceiling for neutral areas with integrated light and multiple service options
- HCL** Halton Skyline Culinary and Human Centric Light (DALI compatible)
- KBO** Extraction box for low emission appliances for total or additional makeup air
- LFU** Ceiling Laminar Flow Unit for total or additional makeup air
- MRV** M.A.R.V.E.L. energy saving technology (smart and self-balanced airflows optimization system with zone control)
- FSS** ANSUL® R-102™ fire suppression system factory pre-installed



Parsley

JOGAKARTA, INDONESIA

KVF

Capture Jet™ hood with integrated makeup air

KVI

Capture Jet™ hood





Yakumi

MANILA, THE PHILIPPINES

UVF

Capture Ray™ hood with Capture Jet™ technology and integrated makeup air

UVI

Capture Ray™ hood with Capture Jet™ technology

UWF

Capture Ray™ and Water Wash hood with Capture Jet™ technology and integrated makeup air

UWI

Capture Ray™ and Water Wash hood with Capture Jet™ technology



71



72



Nanjing Institute of Tourism and Hospitality

NANJING, CHINA



KCJ

Capture Jet™ ventilated ceiling with low velocity makeup air

KCP

Suspended ceiling for neutral areas with integrated light and multiple service options

PST

PolluStop Exhaust Air Handling Unit with pollution control

MRV

M.A.R.V.E.L. energy saving technology
(smart and self-balanced airflows optimization system with zone control)

LFU

Ceiling Laminar Flow Unit for total or additional makeup air

KBO

Extraction box for low emission appliances for total or additional makeup air



73



74

Pitaya

LE HAVRE, FRANCE

UVF

Capture Ray™ hood with Capture Jet™ technology and integrated makeup air

KVF

Capture Jet™ hood with integrated makeup air

HCL

Halton Skyline Culinary and Human Centric Light (DALI compatible)



75

Pitaya

PERPIGNAN, FRANCE

UVF

Capture Ray™ hood with Capture Jet™ technology and integrated makeup air

HCL

Halton Skyline Culinary and Human Centric Light (DALI compatible)





Mensa Garching

GARCHING BEI MÜNCHEN, GERMANY

- KCW-UV** Water Wash and Capture Ray™ ventilated ceiling with Capture Jet™ technology and low velocity makeup air
- KCJ-UV** Capture Ray™ ventilated ceiling with Capture Jet™ technology and low velocity makeup air
- KCV** Ventilated ceiling for dishwashing areas with low velocity makeup air and acoustic panels
- KCP** Suspended ceiling for neutral areas with integrated light and multiple service options
- JES** Jet Extraction System for display cooking areas
- HCL** Halton Skyline Culinary and Human Centric Light (DALI compatible)
- LFU** Ceiling Laminar Flow Unit for total or additional makeup air
- KBO** Extraction box for low emission appliances for total or additional makeup air
- MRV** M.A.R.V.E.L. energy saving technology (smart and self-balanced airflows optimization system with zone control)
- FSS** ANSUL® R-102™ fire suppression system factory pre-installed



76







78



Pitaya

TOULOUSE, FRANCE

UVF

Capture Ray™ hood with Capture Jet™ technology and integrated makeup air

KGS

Duct safety control system for new or existing kitchens

HCL

Halton Skyline Culinary and Human Centric Light (DALI compatible)



Heki

OKINAWA, JAPAN

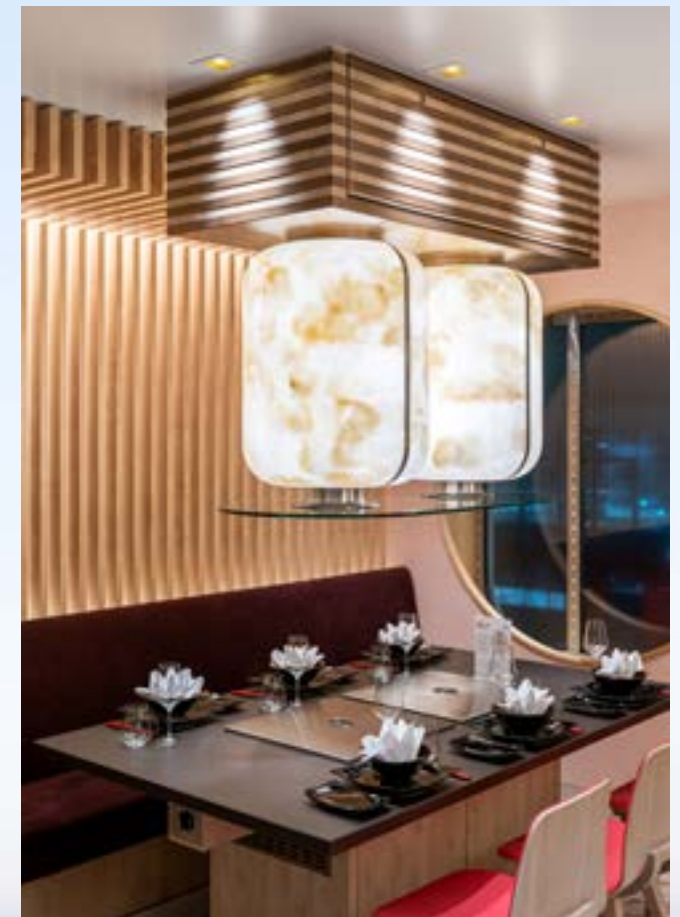


Capture Jet™ ventilated ceiling with low velocity makeup air



81





Aida Cosma

ON THE SEAS

- JES** Jet Extraction System for display cooking areas
- KWH** Water Wash Hood with Capture Jet™ technology (USPHS)
- KFM** Exhaust Hood (USPHS)
- KVM** Steam Hood for dishwashing areas (USPHS)



83



By courtesy of Kari Palsila



Costa Toscana

ON THE SEAS

- KW3** Water Wash Hood with Capture Jet™ and Capture Ray™ technologies (USPHS)
- KWH** Water Wash Hood with Capture Jet™ technology (USPHS)
- KFM** Exhaust Hood (USPHS)
- KVM** Steam Hood for dishwashing areas (USPHS)



By courtesy of Kari Palsila

Costa Smeralda

ON THE SEAS

- KW3** Water Wash Hood with Capture Jet™ and Capture Ray™ technologies (USPHS)
- KWH** Water Wash Hood with Capture Jet™ technology (USPHS)
- KFM** Exhaust Hood (USPHS)
- KVM** Steam Hood for dishwashing areas (USPHS)



85



86



Gourmet Garage

BALI, INDONESIA



- UVF** Capture Ray™ hood with Capture Jet™ technology and integrated makeup air
- KCJ-UV** Capture Ray™ ventilated ceiling with Capture Jet™ technology and low velocity makeup air
- KMC** Halton MobiChef™ mobile recirculating station with Capture Jet™ technology
- HCL** Halton Skyline Culinary and Human Centric Light (DALI compatible)



87



88



Photos by courtesy of Panoramahotel, Oberjoch



Panoramahotel Oberjoch

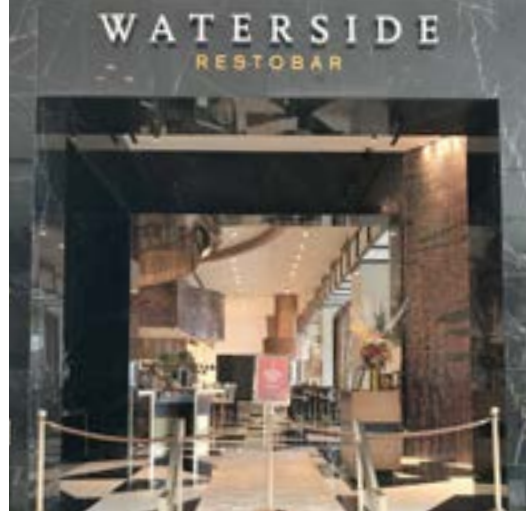
BAD HINDELANG, GERMANY

- KCV-WW** Water Wash ventilated ceiling for dishwashing areas with low velocity makeup air and acoustic panels
- KCW** Water Wash ventilated ceiling with Capture Jet™ technology and low velocity makeup air
- KCP** Suspended ceiling for neutral areas with integrated light and multiple service options
- LFU** Ceiling Laminar Flow Unit for total or additional makeup air
- KBO** Extraction box for low emission appliances for total or additional makeup air
- HCL** Halton Skyline Culinary and Human Centric Light (DALI compatible)

Halton



89



Waterside

MANILA, THE PHILIPPINES

UVF

Capture Ray™ hood with Capture Jet™ technology and integrated makeup air

UVI

Capture Ray™ hood with Capture Jet™ technology

UWF

Capture Ray™ and Water Wash hood with Capture Jet™ technology and integrated makeup air

UWI

Capture Ray™ and Water Wash hood with Capture Jet™ technology



90



Jeju Dream Tower

JEJU, SOUTH KOREA

- UVI** Capture Ray™ hood with Capture Jet™ technology
- UWI** Capture Ray™ and Water Wash hood with Capture Jet™ technology
- CMW-IMOD** Cold Mist On Demand Hood with Capture Jet™ technology
- KVV** Steam hood for dishwashing areas
- KCJ-UV** Capture Ray™ ventilated ceiling with Capture Jet™ technology and low velocity makeup air
- CCW** Water Wash control cabinet



91



Schlosshotel Fleesensee

GOHREN LEBBIN, GERMANY

- KCI-UV** Capture Ray™ ventilated ceiling
with Capture Jet™ technology and low velocity makeup air
- UVI** Capture Ray™ hood with Capture Jet™ technology
- MRV** M.A.R.V.E.L. energy saving technology
(smart and self-balanced airflows optimization system with zone control)
- HCL** Halton Skyline Culinary and Human Centric Light (DALI compatible)



92





Grand Hyatt Jakarta

JAKARTA, INDONESIA

- KVF** Capture Jet™ hood with integrated makeup air
- KVI** Capture Jet™ hood
- UVI** Capture Ray™ hood with Capture Jet™ technology
- KCJ-UV** Capture Ray™ ventilated ceiling with Capture Jet™ technology and low velocity makeup air
- CBR** Capture Bar air curtain



94



Ancora

WEST VANCOUVER, BC, CANADA

- KVE-UV** Capture Ray™ UV exhaust hood (ETL) with Capture Jet™ technology
- MRV** M.A.R.V.E.L. energy saving technology (UL)
(smart and self-balanced airflows optimization system with zone control)
- PST-A** Pollution Control Unit (UL) modular pollution control unit
- KCD** Kitchen Ceiling Diffuser high airflow capacities
- FSS** ANSUL® R-102™ fire suppression system factory pre-installed



95



96



Alléno Paris

PARIS, FRANCE

3 Michelin stars

KVF

Capture Jet™ hood with integrated makeup air

CMW-IMOD

Cold Mist On Demand Hood with Capture Jet™ technology

HCL

Halton Skyline Culinary and Human Centric Light
(DALI compatible)

Photos by courtesy of Antoine Graf and Yannick Alléno group



97



Lotte World Tower

SEOUL, SOUTH KOREA

KVI

Capture Jet™ hood

UVI

Capture Ray™ hood with Capture Jet™ technology



Hotel Nikko Bangkok

BANGKOK, THAILAND

UVF

Capture Ray™ hood with Capture Jet™ technology and integrated makeup air

UVI

Capture Ray™ hood with Capture Jet™ technology



99



100



ČSOB

PRAGUE, CZECH REPUBLIC

- KVI** Capture Jet™ hood
- KVD** Hood for dishwashing areas with integrated makeup air
- KCJ-UV** Capture Ray™ ventilated ceiling with Capture Jet™ technology and low velocity makeup air
- KCP** Suspended ceiling for neutral areas with integrated light and multiple service options
- JES** Jet Extraction System for display cooking areas
- LFU** Ceiling Laminar Flow Unit for total or additional makeup air
- KBO** Extraction box for low emission appliances for total or additional makeup air
- HCL** Halton Skyline Culinary and Human Centric Light (DALI compatible)



101



Studio City

MACAU

KVI

Capture Jet™ hood

UVI

Capture Ray™ hood with Capture Jet™ technology



102

Halton





HIK9

SHANGHAI, CHINA



- KCI** Capture Jet™ ventilated ceiling with low velocity makeup air
- HCL** Halton Skyline Culinary and Human Centric Light (DALI compatible)
- LFU** Ceiling Laminar Flow Unit for total or additional makeup air
- KBO** Extraction box for low emission appliances for total or additional makeup air



103



104



Zest | One & Only The Palm

DUBAI, UNITED ARAB EMIRATES

CMW-IMOD Cold Mist On Demand Hood with Capture Jet™ technology

UVI Capture Ray™ hood with Capture Jet™ technology

CBR Capture Bar air curtain



105



Fachhochschule

ERFURT, GERMANY

- KCW-UV** Water Wash and Capture Ray™ ventilated ceiling with Capture Jet™ technology and low velocity makeup air
- KCV** Ventilated ceiling for dishwashing areas with low velocity makeup air and acoustic panels
- KCP** Suspended ceiling for neutral areas with integrated light and multiple service options
- JES** Jet Extraction System for display cooking areas
- MRV** M.A.R.V.E.L. energy saving technology (smart and self-balanced airflows optimization system with zone control)
- FSS** ANSUL® R-102™ fire suppression system factory pre-installed
- LFU** Ceiling Laminar Flow Unit for total or additional makeup air



106





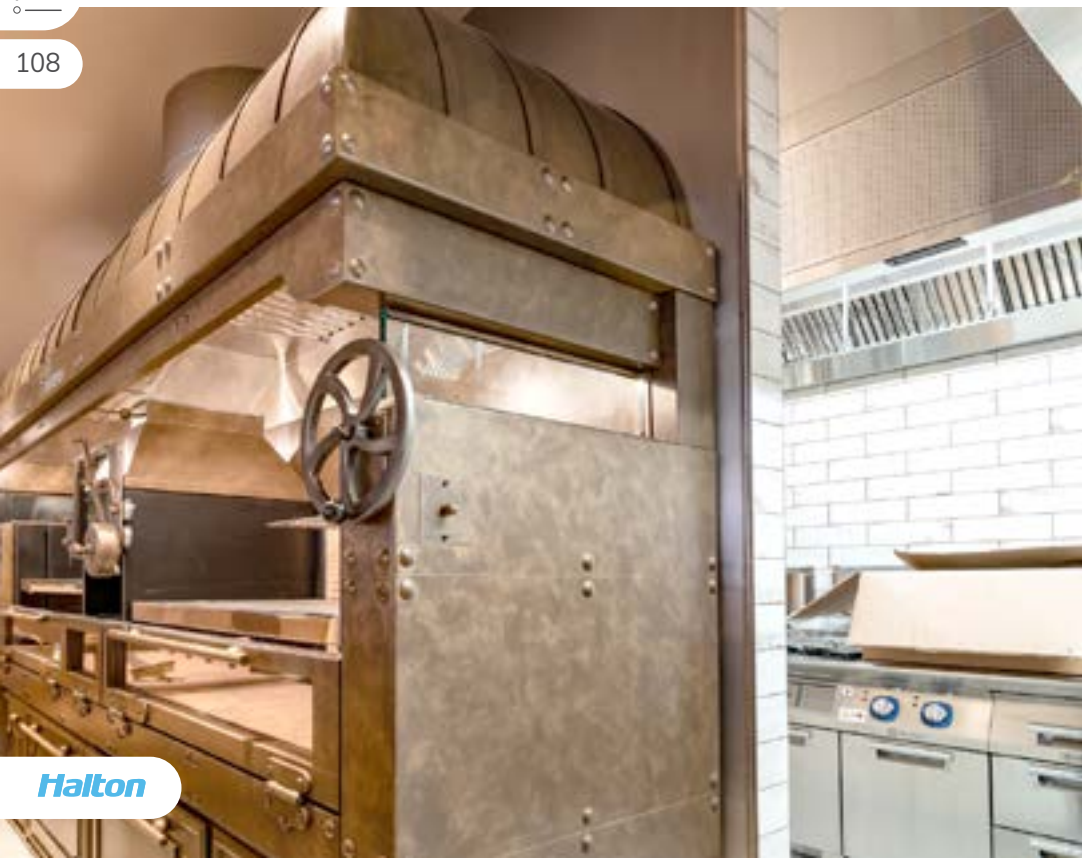
Brisbane Racing Club

BRISBANE, AUSTRALIA

KMC Halton MobiChef™ mobile recirculating station with Capture Jet™ technology



107





Eataly

LONDON, UNITED KINGDOM

- UVF** Capture Ray™ hood with Capture Jet™ technology and integrated makeup air
- KVF** Capture Jet™ hood with integrated makeup air
- KVI** Capture Jet™ hood
- KSR/S** Capture Jet™ low profile hood special fryers
- KVV** Steam hood for dishwashing areas
- CCL** Cyclocell cassette ventilated ceiling - Flat design with integrated makeup air
- PEU** PolluStop Exhaust Air Handling Unit with pollution control – Eurovent accredited
- RAH** Recirculating unit for kitchens - No requirement for route to atmosphere
- MRV** M.A.R.V.E.L. energy saving technology
(smart and self-balanced airflows optimization system with zone control)
- FSS** ANSUL® R-102™ fire suppression system factory pre-installed



109



Pavillon | Hermitage Hotel

MONTE CARLO, MONACO

1 Michelin star

KCJ-UV Capture Ray™ ventilated ceiling with Capture Jet™ technology and low velocity makeup air

HCL Halton Skyline Culinary and Human Centric Light (DALI compatible)

FSS ANSUL® R-102™ fire suppression system factory pre-installed

Photos by courtesy of Société des Bains de Mer Monte Carlo





L'Atelier Robuchon

MADRID, SPAIN

- UVI** Capture Ray™ hood with Capture Jet™ technology
- UVF** Capture Ray™ hood with Capture Jet™ technology and integrated makeup air
- KVI** Capture Jet™ hood
- HCL** Halton Skyline Culinary and Human Centric Light (DALI compatible)



111



Fortnum & Mason

LONDON, UNITED KINGDOM

- UVF** Capture Ray™ hood with Capture Jet™ technology and integrated makeup air
- KVF** Capture Jet™ hood with integrated makeup air
- CMW-FMOD** Cold Mist On Demand Hood with Capture Jet™ technology and integrated makeup air
- PEU** PolluStop Exhaust Air Handling Unit with pollution control – Eurovent accredited
- AEU** Aerolys supply Air Handling Unit with Halton's urban pack including UVGI treatment – Eurovent accredited
- RAH** Recirculating unit for kitchens no requirement for route to atmosphere for all electric catering equipment



112



Halton





EN Hotel

ZAKOPANE, POLAND

- KCJ** Capture Jet™ ventilated ceiling with low velocity makeup air
- HCL** Halton Skyline Culinary and Human Centric Light (DALI compatible)
- CBR** Capture Bar air curtain

Kitchen design and installation - RD Professional



113



114

KLM Royal Dutch Airlines

AMSTERDAM AIRPORT SCHIPHOL, THE NETHERLANDS

KVF

Capture Jet™ hood with integrated makeup air

KVI

Capture Jet™ hood

UVI

Capture Ray™ hood with Capture Jet™ technology

KVV

Steam hood for dishwashing areas

HCL

Halton Skyline Culinary and Human Centric Light (DALI compatible)

LFU

Ceiling Laminar Flow Unit for total or additional makeup air

FSS

ANSUL® R-102™ fire suppression system factory pre-installed

KCF

Ventilated ceiling



Albert Einstein Hospital

SAO PAULO, BRAZIL

- KVE-UV** Capture Ray™ UV hood (ETL) with Capture Jet™ technology
- KVC-UV** Capture Ray™ UV hood (ETL) with Capture Jet™ technology and supply air
- KWC-UV** Capture Ray™ UV island hood (ETL) with Capture Jet™ technology and supply air
- KCH-UV** Capture Ray™ UV condensate hood (ETL) with Capture Jet™ technology
- MRV** M.A.R.V.E.L. energy saving technology (UL)
(smart and self-balanced airflows optimization system with zone control)
- PST-A** Pollution Control Unit (UL) modular pollution control unit



115



116





Červený Jelen

PRAGUE, CZECH REPUBLIC

CMW-I Cold Mist Hood with Capture Jet™ technology

KVI Capture Jet™ hood



117



DB Brick

FRANKFURT, GERMANY

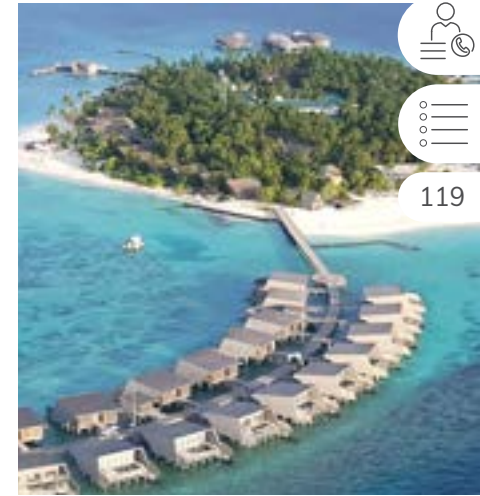
- KCJ-UV** Capture Ray™ ventilated ceiling with Capture Jet™ technology and low velocity makeup air
- KCJ** Capture Jet™ ventilated ceiling with low velocity makeup air
- KCV** Ventilated ceiling for dishwashing areas with low velocity makeup air and acoustic panels
- KCP** Suspended ceiling for neutral areas with integrated light and multiple service options
- HCL** Halton Skyline Culinary and Human Centric Light (DALI compatible)
- JES** Jet Extraction System for display cooking areas
- LFU** Ceiling Laminar Flow Unit for total or additional makeup air
- KBO** Extraction box for low emission appliances for total or additional makeup air
- FSS** ANSUL® R-102™ fire suppression system factory pre-installed



The St Regis Maldives Vommuli Resort

VOMMULI, MALDIVES

- CMW-FMOD** Cold Mist On Demand Hood with Capture Jet™ technology and integrated makeup air
- UVF** Capture Ray™ hood with Capture Jet™ technology and integrated makeup air
- KCJ-UV** Capture Ray™ ventilated ceiling with Capture Jet™ technology and low velocity makeup air
- KVI** Capture Jet™ hood
- UVI** Capture Ray™ hood with Capture Jet™ technology
- PST** PolluStop Exhaust Air Handling Unit with pollution control
- FSS** ANSUL® R-102™ fire suppression system factory pre-installed





120



Restaurant Giewont

ZAKOPANE, POLAND

KVF

Capture Jet™ hood with integrated makeup air

KVI

Capture Jet™ hood

HCL

Halton Skyline Culinary and Human Centric Light (DALI compatible)

Kitchen design and installation - AGIW Gastro



121





Time Out Market

DUBAI, UNITED ARAB EMIRATES

UVF

Capture Ray™ hood with Capture Jet™ technology and integrated makeup air

KVI

Capture Jet™ hood

CMW-FMOD

Cold Mist On Demand Hood with Capture Jet™ technology and integrated makeup air

MRV

M.A.R.V.E.L. energy saving technology

(smart and self-balanced airflows optimization system with zone control)



123



124

Le Pavillon by Daniel Boulud

ONE VANDERBILT, NEW YORK, USA

1 Michelin star

- KVE** Capture Jet™ Commercial Kitchen Hood (ETL)
- KVM-A** Capture Jet™ hybrid backshelf hood (ETL)
- KVW** Capture Jet™ island exhaust hood (ETL)
- CH** Condensate Hood
- MRV** M.A.R.V.E.L. energy saving technology (ETL)
(smart and self-balanced airflows optimization system with zone control)
- PST-A** Pollution Control Unit (UL) - Modular Pollution Control Unit
- FSS** ANSUL® R-102™ fire suppression system factory pre-installed



125



Istanbul Airport

ISTANBUL, TURKEY

- KWF** Water Wash hood with Capture Jet™ technology and integrated makeup air
- KWI** Water Wash hood with Capture Jet™ technology
- KVV** Steam hood for dishwashing areas
- PEU** PolluStop Exhaust Air Handling Unit with pollution control – Eurovent accredited
- MRV** M.A.R.V.E.L. energy saving technology
(smart and self-balanced airflows optimization system with zone control)





127



128





Test Kitchen H

TOKYO, JAPAN

KCW

Water Wash ventilated ceiling with Capture Jet™ technology and low velocity makeup air

UVGI-SA

Halton Sentinel Mobile Filtration Unit



129



130

Daily Chef

MOSCOW, RUSSIA

KMC

Halton MobiChef™ mobile recirculating station with Capture Jet™ technology



131



132



Pasibus

SZCZECIN, POLAND

- UVF** Capture Ray™ hood with Capture Jet™ technology and integrated makeup air
- USR/F** Capture Ray™ low profile and freestanding hood with Capture Jet™ technology
- LFU** Ceiling Laminar Flow Unit for total or additional makeup air
- KBO** Extraction box for low emission appliances for total or additional makeup air
- FSS** ANSUL® R-102™ fire suppression system factory pre-installed



133

Pocket in the House by Pontus Frithiof

GOTHENBURG, SWEDEN

- KCJ** Capture Jet™ ventilated ceiling with low velocity makeup air
- UVI** Capture Ray™ hood with Capture Jet™ technology
- KVV** Steam hood for dishwashing areas
- MRV** M.A.R.V.E.L. energy saving technology (smart and self-balanced airflows optimization system with zone control)
- HCL** Halton Skyline Culinary and Human Centric Light (DALI compatible)



Nobu | Ritz-Carlton

ISTANBUL, TURKEY

UVF

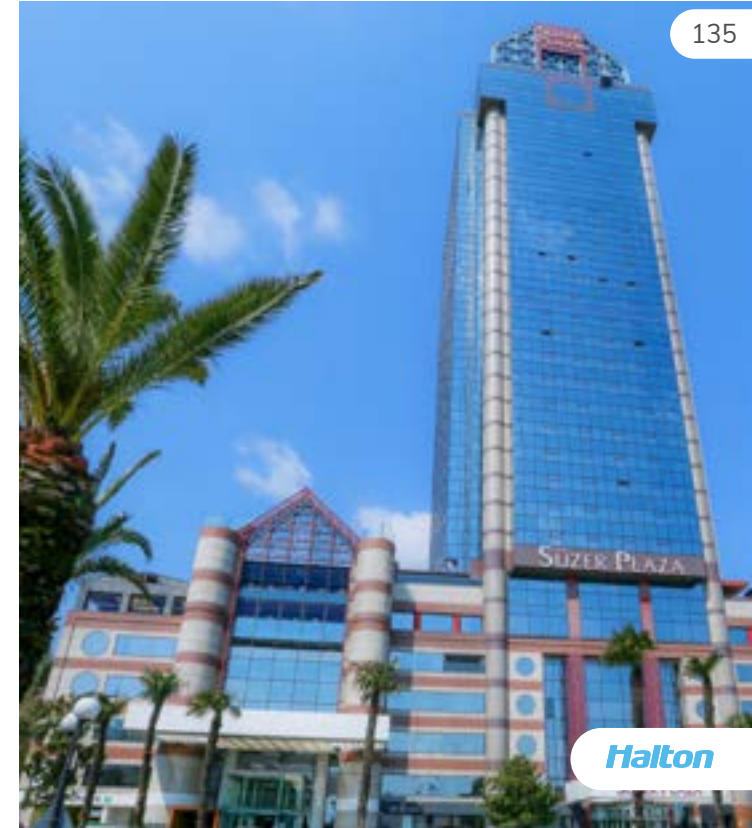
Capture Ray™ hood with Capture Jet™ technology and integrated makeup air

KMC

Halton MobiChef™ mobile recirculating station with Capture Jet™ technology

HCL

Halton Skyline Culinary and Human Centric Light (DALI compatible)



135

Halton



136



Halton

Insurance Company

BAVARIA, GERMANY

- KCJ** Capture Jet™ ventilated ceiling with low velocity makeup air
- KCW** Water Wash ventilated ceiling with Capture Jet™ technology and low velocity makeup air
- KCP** Suspended ceiling for neutral areas with integrated light and multiple service options
- JES** Jet Extraction System for display cooking areas
- MRV** M.A.R.V.E.L. energy saving technology (smart and self-balanced airflows optimization system with zone control)
- KBO** Extraction box for low emission appliances for total or additional makeup air
- FSS** ANSUL® R-102™ fire suppression system factory pre-installed
- HCL** Halton Skyline Culinary and Human Centric Light (DALI compatible)





Solna 1

KRAKÓW, POLAND

- KVF** Capture Jet™ hood with integrated makeup air
- KVI** Capture Jet™ hood
- HCL** Halton Skyline Culinary and Human Centric Light (DALI compatible)
- LFU** Ceiling Laminar Flow Unit for total or additional makeup air

Kitchen design and installation - RD Professional



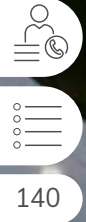


139

Ulus 29

ISTANBUL, TURKEY

CMW-IMOD Cold Mist On Demand Hood with Capture Jet™ technology



Shake Shack | Deira City Centre

DUBAI, UNITED ARAB EMIRATES

UVF

Capture Ray™ hood with Capture Jet™ technology and integrated makeup air



141



Halton



142



Hotel Central

GDANSK, POLAND

- KVF** Capture Jet™ hood with integrated makeup air
- KVI** Capture Jet™ hood
- KVV** Steam hood for dishwashing areas
- FSS** ANSUL® R-102™ fire suppression system

Kitchen design and installation – GASTRO-TECH



143

Marriott Hotel Sukhumvit

BANGKOK, THAILAND

UVI Capture Ray™ hood with Capture Jet™ technology
FSS ANSUL® R-102™ fire suppression system factory pre-installed



144

Koneser Grill

WARSAW, POLAND

- UVF** Capture Ray™ hood with Capture Jet™ technology and integrated makeup air
- UVI** Capture Ray™ hood with Capture Jet™ technology
- KVI** Capture Jet™ hood
- CMW-FMOD** Cold Mist On Demand Hood with Capture Jet™ technology and integrated makeup air
- LFU** Ceiling Laminar Flow Unit for total or additional makeup air



145

TGV One Utama Cinema

PETALING JAYA, MALAYSIA

KMC

Halton MobiChef™ mobile recirculating station with Capture Jet™ technology





Casa Mia

SHANGHAI, CHINA

KCI

Capture Jet™ ventilated ceiling with low velocity makeup air



147



148



Backstage | Capella Hanoi

HANOI, VIETNAM

CMW-FMOD Cold Mist On Demand Hood with Capture Jet™ technology and integrated makeup air

KVI Capture Jet™ hood

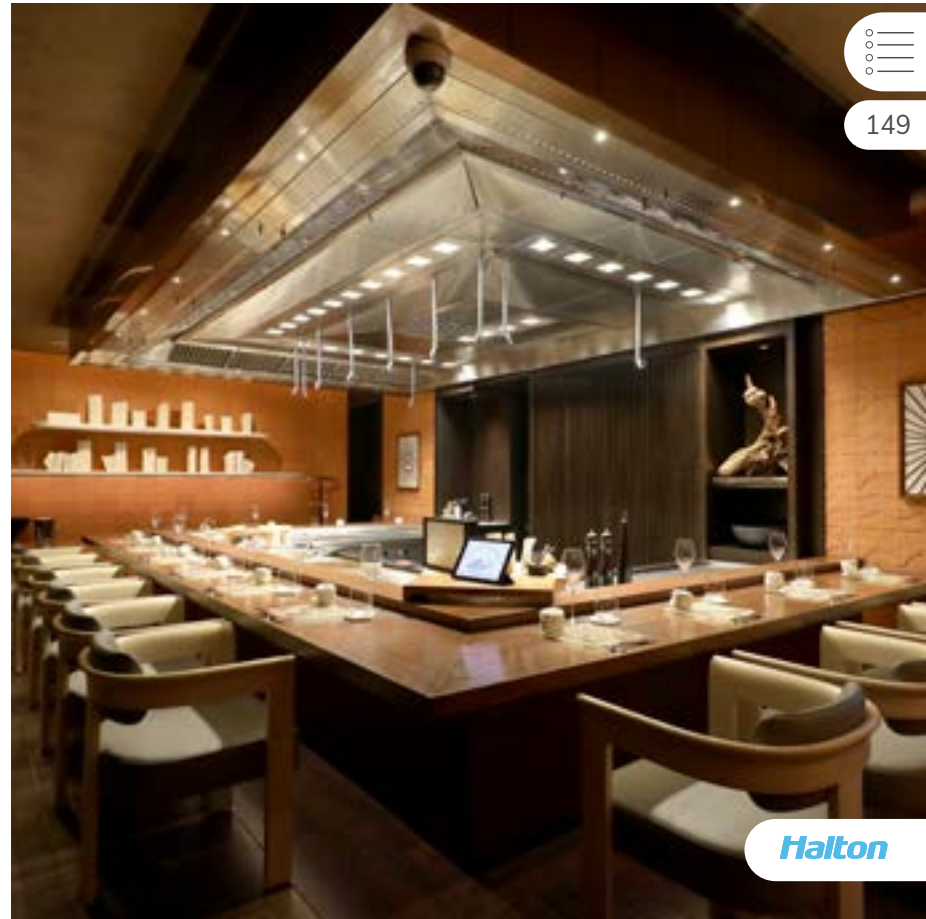
UVI Capture Ray™ hood with Capture Jet™ technology

KCJ-UV Capture Ray™ ventilated ceiling with Capture Jet™ technology and low velocity makeup air

KCJ Capture Jet™ ventilated ceiling with low velocity makeup air y

HCL Halton Skyline Culinary and Human Centric Light (DALI compatible)

FSS ANSUL® R-102™ fire suppression system factory pre-installed



149



Hooks Herrgård

HOK, SWEDEN

UVF

Capture Ray™ hood with Capture Jet™ technology and integrated makeup air

UVI

Capture Ray™ hood with Capture Jet™ technology

HCL

Halton Skyline Culinary and Human Centric Light (DALI compatible)



Halton



The Peak

MANILA, THE PHILIPPINES

UVF

Capture Ray™ hood with Capture Jet™ technology and integrated makeup air

UVI

Capture Ray™ hood with Capture Jet™ technology

FSS

ANSUL® R-102™ fire suppression system factory pre-installed



151



152



Stone Sal

SHANGHAI, CHINA

KCI

Capture Jet™ ventilated ceiling with low velocity makeup air



153



CSE Airbus

TOULOUSE, FRANCE

JES

Jet Extraction System for display cooking areas



154



KasseroL

ANTWERPEN, BELGIUM

KVF

Capture Jet™ hood with integrated makeup air

FSS

ANSUL® R-102™ fire suppression system factory pre-installed



155



Steak 'n Shake

PARIS, FRANCE

- USR/F** Capture Ray™ low profile and freestanding hood with Capture Jet™ technology
- PST** PolluStop Exhaust Air Handling Unit with pollution control
- UVI** Capture Ray™ hood with Capture Jet™ technology
- FSS** ANSUL® R-102™ fire suppression system factory pre-installed



156





157

Josh die Gastwirtschaft

VIENNA, AUSTRIA

- KCJ-UV** Capture Ray™ ventilated ceiling with Capture Jet™ technology and low velocity makeup air
- KCV** Ventilated ceiling for dishwashing areas with low velocity makeup air and acoustic panels
- KCP** Suspended ceiling for neutral areas with integrated light and multiple service options
- HCL** Halton Skyline Culinary and Human Centric Light (DALI compatible)
- FSS** ANSUL® R-102™ fire suppression system factory pre-installed



Halton



158



159



Dorint Hotel Würzburg

WÜRZBURG, GERMANY

- KCJ-UV** Capture Ray™ ventilated ceiling with Capture Jet™ technology and low velocity makeup air
- HSC** Design suspended metal ceiling for applications with strong hygiene demands
- KCP** Suspended ceiling for neutral areas with integrated light and multiple service options
- KCV** Ventilated ceiling for dishwashing areas with low velocity makeup air and acoustic panels
- LFU** Ceiling Laminar Flow Unit for total or additional makeup air
- KBO** Extraction box for low emission appliances for total or additional makeup air
- HCL** Halton Skyline Culinary and Human Centric Light (DALI compatible)



Thon Hotel Cecil

OSLO, NORWAY

- KVF** Capture Jet™ hood with integrated makeup air
- KCI** Capture Jet™ ventilated ceiling with low velocity makeup air
- HCL** Halton Skyline Culinary and Human Centric Light (DALI compatible)
- KVS** Kiosk ventilation system



160



Epoka

WARSAW, POLAND

- KCJ-UV** Capture Ray™ ventilated ceiling with Capture Jet™ technology and low velocity makeup air
- KBO** Extraction box for low emission appliances for total or additional makeup air
- KCP** Suspended ceiling for neutral areas with integrated light and service options
- KVF** Capture Jet™ hood with integrated makeup air
- HCL** Halton Skyline Culinary and Human Centric Light (DALI compatible)



161





Nobu | Four Seasons Hotel

KUALA LUMPUR, MALAYSIA

KCI

Capture Jet™ ventilated ceiling with low velocity makeup air

KVI

Capture Jet™ hood

HCL

Halton Skyline Culinary and Human Centric Light (DALI compatible)

FSS

ANSUL® R-102™ fire suppression system factory pre-installed



162



The Kitchen | De Bijenkorf

UTRECHT, THE NETHERLANDS

- KCJ** Capture Jet™ ventilated ceiling with low velocity makeup air
- CBR** Capture Bar air curtain



163



Halton





Austria Campus

VIENNA, AUSTRIA

- KVF** Capture Jet™ hood with integrated makeup air
- KVI** Capture Jet™ hood
- UVF** Capture Ray™ hood with Capture Jet™ technology and integrated makeup air
- UVI** Capture Ray™ hood with Capture Jet™ technology
- KCJ** Capture Jet™ ventilated ceiling with low velocity makeup air
- KCJ-UV** Capture Ray™ ventilated ceiling with Capture Jet™ technology and low velocity makeup air
- KCV** Ventilated ceiling for dishwashing areas with low velocity makeup air and acoustic panels
- HCL** Halton Skyline Culinary and Human Centric Light (DALI compatible)
- LFU** Ceiling Laminar Flow Unit for total or additional makeup air
- FSS** ANSUL® R-102™ fire suppression system factory pre-installed



165



Scandic Kødbyen

COPENHAGEN, DENMARK

- KVI** Capture Jet™ hood
- UVF** Capture Ray™ hood with Capture Jet™ technology and integrated makeup air
- UVI** Capture Ray™ hood with Capture Jet™ technology
- KVD** Hood for dishwashing areas with integrated makeup air
- KBO** Extraction box for low emission appliances for total or additional makeup air
- MRV** M.A.R.V.E.L. energy saving technology
(smart and self-balanced airflows optimization system with zone control)
- LFU** Ceiling Laminar Flow Unit for total or additional makeup air
- HCL** Halton Skyline Culinary Light (DALI compatible)
- KGS** Duct safety control system for or new or existing kitchens
- FSS** ANSUL® R-102™ fire suppression system factory pre-installed



166





Hotel Ferreus

KRAKÓW, POLAND

KVF

Capture Jet™ hood with integrated makeup air

JES

Jet Extraction System for display cooking areas

Kitchen design and installation - AGIW Gastro



167



168

Åstorp Central Kitchen

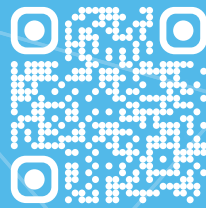
ÅSTORP, SWEDEN

KCJ-UV Capture Ray™ ventilated ceiling with Capture Jet™ technology and low velocity makeup air

MRV M.A.R.V.E.L. energy saving technology
(smart and self-balanced airflows optimization system with zone control)

KVV Steam hood for dishwashing areas

You want to discover more of our references?
Visit our reference gallery.



Halton

The background is a solid blue color with various abstract geometric patterns. In the upper left, there are curved, parallel lines. In the upper right, there are concentric circles and a grid of small squares. In the lower left, there is a network diagram with nodes and connecting lines. In the lower right, there are more concentric circles and a grid of small squares. The text "www.halton.com" is centered in the middle of the image.

www.halton.com



Project Book



Full gallery



FlipBook

Enabling Wellbeing

Halton