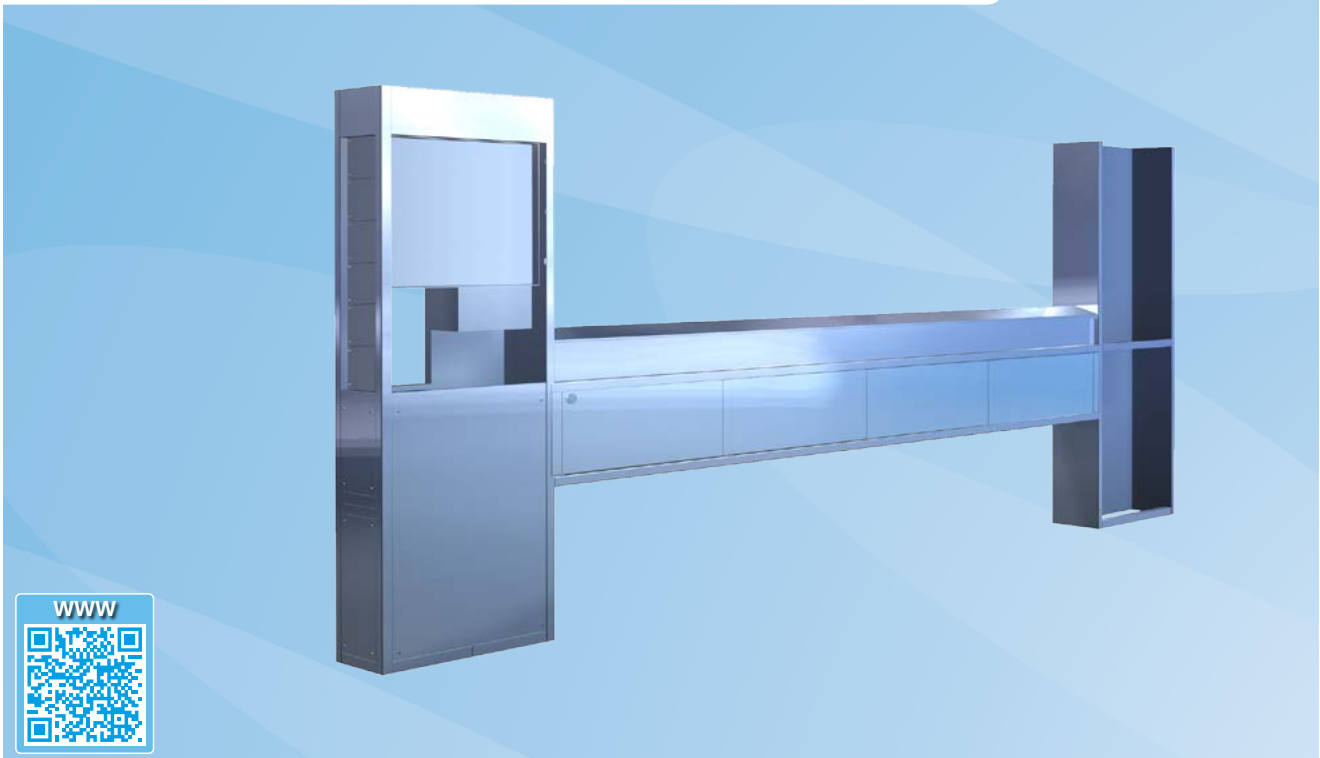


UTL-W, UTL-I

Utiline

UTL/1303/UK



Modular system, standard range of components with or without services.

- Modular expandable design and construction
- Available as either a wall type unit (UTL-W) or island type (UTL-I)
- All integral pipework and electrical services pre-assembled and tested off site.
- Can be supplied with or without integral services
- Co-ordinated interface with ventilation products
- Fully accessible for easy cleaning and maintenance
- Total segregation of M & E Services
- A wide range of optional extras
- Inbuilt flexibility allowing ease of additions/changes
- Dedicated and or multi serviced users to suit each application
- Compatible with Unipoint range of SDU's

Application

Developed for use in commercial kitchens, the Utiline range of SDU's provides off the shelf components affording a cost effective way of distributing services to commercial cooking applications. The Utiline system is totally modular in its construction and is expandable to facilitate any cooking 'line up'. Pre-assembled off site, the Utiline eliminates the co-ordination of other trades, allowing a single point of connection for final 'hook up' to gas, water, electric etc.

Consultant Specification

Services distribution unit model Utiline_____ having overall dimensions of____x250 x 1200/height to suit ventilation canopy/false or ventilated ceiling. (Delete as required).

Unit manufactured from 1.2mm thick (18g) stainless steel, fully formed, folded and welded (where applicable).

Unit comprising:

Electrical riser complete with range of rotary type isolators and electrical distribution board (Delete as required)

Mechanical riser - complete with side hinged door for access to valved services

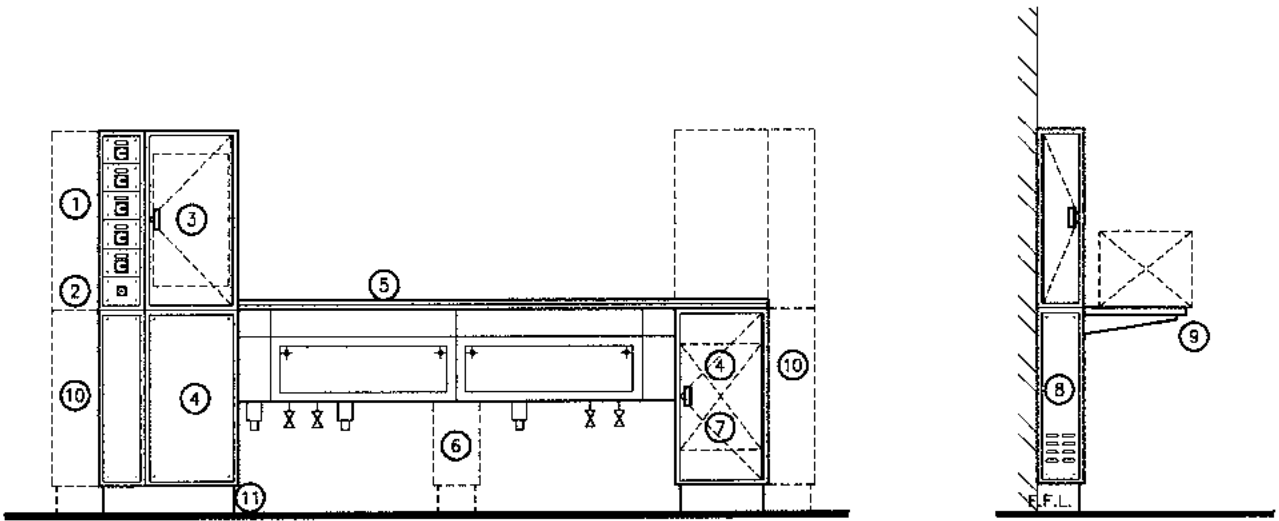
Combined Elec/mech riser complete with range of rotary type isolators and electrical distribution board (Delete as required) and side hinged door for access to valved services. Services to be fully segregated throughout.

Horizontal raceway complete with lift off access panels (mechanical section) and conceal fixed removable sloping profile lid (electrical section) Services fully segregated with all services being mechanically sealed. Base of raceway fitted with range of interchangeable service plates to accommodate standard range of utility outlets.

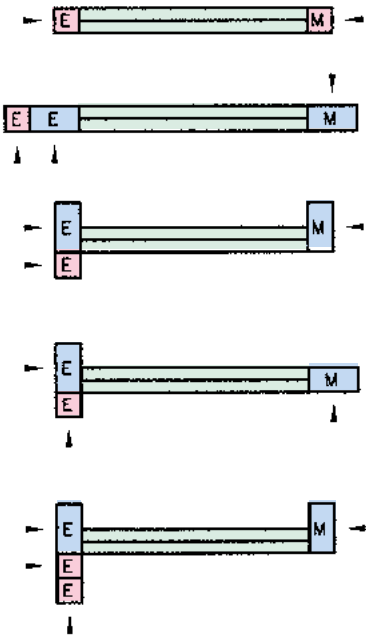
Modifications & Options

- Incorporation of integrated Water Wash Control Panel*
 - Incorporation of integrated Ecology Unit Control Panel*
 - Incorporation of integrated Fire Suppression Control Panel*
 - Incorporation of integrated Electrical Distribution Control Panel
 - Gas Solenoid Valve
 - Cantilevered shelf supports for high level equipment
 - Fuel shut off facility
 - Ventilation canopy lighting control
 - Ventilation canopy Fan Control
 - Cooking equipment flexible hoses/quick release assemblies
 - Combined electrical/mechanical riser
 - General purpose switched socket outlets
 - Bumper rail
- * Unipoint detailing applies

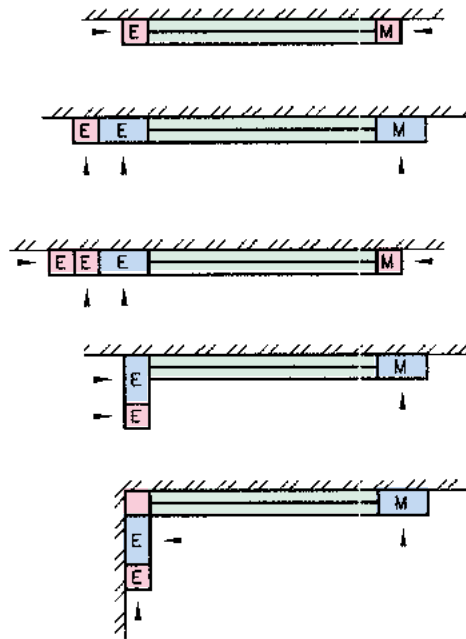
Model UTL-W - wall type



Island combinations



Wall combinations



Service Options

Electric
gas
Cold water
Hot water (Flow & Return)

Utiline Options

- 1) Rotary Isolators
- 2) Emergency fuel shut off (optional)
- 3) Electrical Distribution Board (optional)
- 4) Access panels/doors
- 5) Concealed fixed sloping lid
- 6) Pedestal leg
- 7) Fire Suppression System (optional)
- 8) Ventilated access panels/doors
- 9) Cantilevered Equipment supports
- 10) Outline of fiser options

The company has a policy of continuous product development, therefore we reserve the right to modify design and specifications without notice. Utiline is a registered trademark of Halton Vent Master Ltd.



www.halton.com/foodservice

France

Halton SAS
Technoparc Futura
BP 102
62402 Béthune Cedex
Tel. +33 (0)1 80 51 64 00
Fax +33 (0)3 21 64 55 10
foodservice@halton.fr
www.halton.fr

Germany

Halton Foodservice GmbH
Tiroler Str. 60
83242 Reit im Winkl
Tel. +49 8640 8080
Fax +49 8640 80888
info.de@halton.com
www.halton.de

USA

Halton Co.
101 Industrial Drive
Scottsville, KY 42164
Tel. +1 270 2375600
Fax + 1 270 2375700
info@haltoncompany.com
www.haltoncompany.com

Asia Pacific

Halton Group Asia Sdn Bhd
PT 26064
Persiaran Teknologi Subang
Subang Hi-Tech Industrial Park
47500 Subang Jaya,
Selangor Malaysia
Tel. +60 3 5622 8800
Fax +60 3 5622 8888
sales@halton.com.my
www.halton.com

United Kingdom

Halton Foodservice Ltd
11 Laker Road
Airport Industrial Estate
Rochester, Kent ME1 3QX
Tel. +44 1634 666 111
Fax +44 1634 666 333
foodservice@halton.co.uk
www.halton.co.uk

Japan

Halton Co. Ltd.
Hatagaya ART-II 2F
1-20-11 Hatagaya
Shibuya-ku
Tokyo 151-0072
Tel.+ 81 3 6804 7297
Fax + 81 3 6804 7298
salestech.jp@halton.com
www.halton.jp

Canada

Halton Indoor Climate
Systems, Ltd.
1021 Brevik Place
Mississauga, Ontario
L4W 3R7
Tel. + 905 624 0301
Fax + 905 624 5547
info@haltoncanada.com
www.haltoncanada.com

Middle-East

Halton Middle-East FZE
Jebel Ali Free Zone
Office/Warehouse S3B3WH08
P.O. Box 18116
Dubai
United Arab Emirates
Tel. + 971 (0)4 813 8900
Fax + 971 (0)4 813 8901
sales@halton.ae
www.halton.com

The company has a policy of continuous product development, therefore we reserve the right to modify design and specifications without notice. For more information, please contact your nearest Halton agency. To find it: www.halton.com/locations