

# Halton's GEF

## Heavy Duty Grease Exhaust Fans





## Features

**UL and ULC Listed for 3" (76mm) Clearance from Combustible Material** — Allows for reduced roof openings.

**Field Ducting Costs Reduced** — Duct extension through curb and roof is provided as an integral part of the fan.

**Discharge Clearance of 40" (1016mm)** — As required by NFPA 96, eliminates discharge duct work above the roof.

**Electrical Installation Costs Reduced**— An electrical conduit sleeve complete with high temperature wire is supplied and installed with a disconnect switch as a complete part of the GEFA fan package. The conduit runs the complete length of the duct and the wire terminates approximately 6" (152mm) below the bottom of the duct stub.

**Servicing Made Easy** — Access doors to fan housing are completely removable.

**Fan and Duct Cleaning Made Easy**—The fan drive package section is hinged and pivots to allow access directly to the exhaust duct.

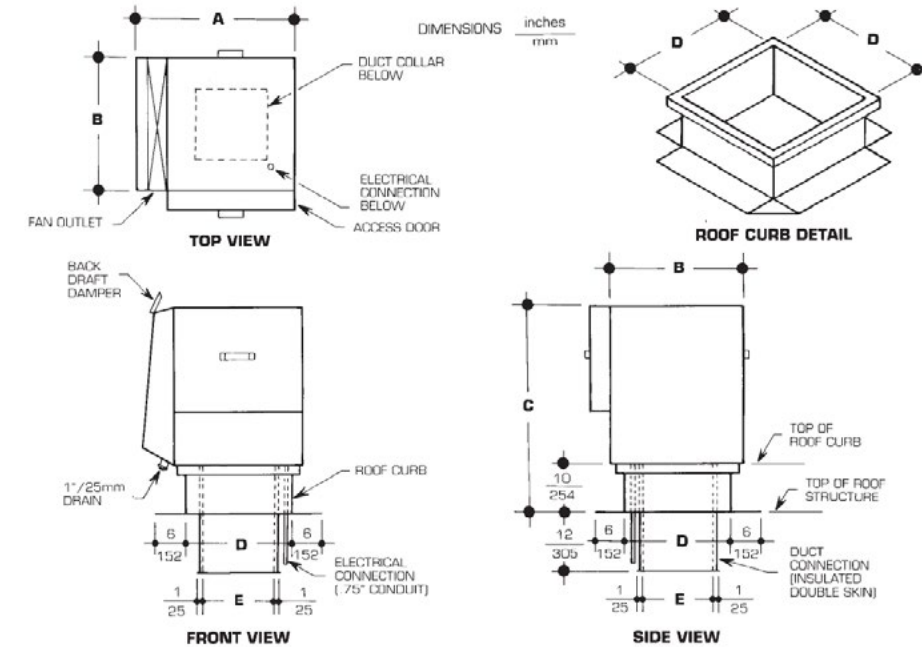
**High Velocity Vertical Discharge** —Average velocity 3000 FPM (15.24 m/s), as recommended by environmental authorities.



## GEF Series Grease Exhaust Fans

MODEL NUMBER	A		B		C		ROOF OPENING D		E		AIR RANGE		MOTOR SIZES		WEIGHTS			
	in.	mm	in.	mm	in.	mm	in.	mm	in.	mm	cfm	m <sup>3</sup> /s	HP	kW	CRATED		UNCATED	
															lbs.	kg.	lbs.	kg.
GEF-12A	32.25	819	27.00	686	42.25	1073	21.50	546	14.50	368	800	.38	.50	.37	490	223	395	180
GEF-15A	36.25	927	30.00	762	44.50	1130	25.50	648	18.50	470	2200	1.04	2	1.49	590	268	475	216
GEF-18A	40.25	1022	35.00	889	50.00	1270	28.00	711	21.00	533	1600	.76	.50	.37	730	332	560	255
GEF-20A	42.25	1073	35.00	889	51.25	1302	30.50	775	23.50	597	3000	1.42	3	2.24	840	382	665	302
GEF-22A	45.25	1149	37.50	953	53.00	1346	33.00	838	26.00	660	2200	1.04	.75	.56	990	450	805	366
GEF-24A	48.25	1226	39.50	1003	54.75	1391	35.00	889	28.00	711	4600	2.17	5	3.73	1095	498	885	402
GEF-27A	54.75	1391	52.00	1321	60.25	1530	37.00	940	30.00	762	3200	1.51	1	.75	1360	618	1075	488
											6000	2.83	7.50	5.60				
											4200	1.98	1	.75				
											7400	3.49	7.50	5.60				
											5400	2.55	1.50	1.12				
											8400	3.96	7.50	5.60				
											6600	3.12	1.50	1.12				
											10800	5.10	7.50	5.60				

NOTE: larger models are available. Sizes, charts and prices are available on request. Halton



## GEF Installation Notes

Halton GEF Series fans come complete with curb, motor, drive package, duct stub, back draft damper and disconnect switch pre-wired through and electrical conduit. UL and U.L.C listed for 3" (76mm) clearance from combustible material allows for reduced roof opening sizes. Complete with B.I. (Backward Inclined) wheel to handle heavy grease conditions. Access doors are removable with components readily accessible for service.

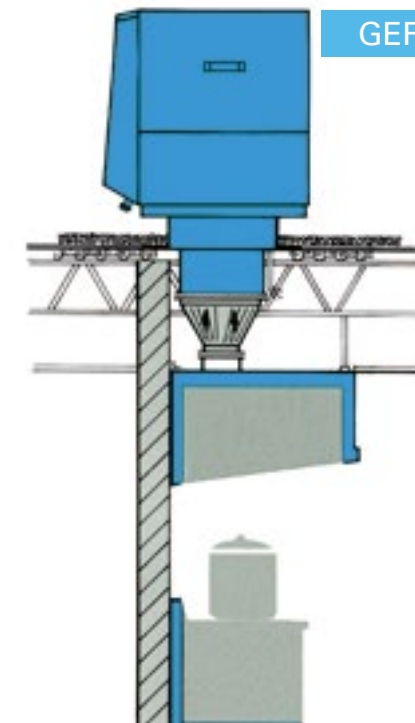
Drive package section of fan is hinged to provide complete access to duct work for cleaning.

**HALTON'S UL AND ULC LISTING CAN REDUCE YOUR ROOF OPENING REQUIREMENTS** 3" (76mm) clearance from inlet duct collar to combustible roof opening structure.

**Electrical Safety** disconnect switch is provided on the fan prewired through a conduit, which extends down with the duct stub.

**Standard Voltages** 208, 480 or 575 volts, three phase, 60 Hz. WHEN ORDERING, SPECIFY VOLTAGE, PHASE AND FREQUENCY. Other voltages are available on request.

**Pre-Shipping** Roof curb can be pre-shipped separately, when required.



Continuous product improvement is a Halton policy, therefore specifications and design are subject to change without notice.



## ABOUT US

Halton Group is the global technology leader in indoor air solutions for demanding spaces. The company develops and provides solutions for commercial and public premises, healthcare institutions and laboratories, professional kitchens and restaurants as well as energy production environments and marine vessels. Halton's mission is to provide its end-users with safe, comfortable, and productive indoor environments that are energy-efficient and comply with sustainable principles.

### **Halton Company**

101 Industrial Drive  
Scottsville, KY 42164, USA  
Tel: (270) 237-5600  
Fax: (270) 237-5700

### **Halton Indoor Climate Systems**

1021 Brevik Place  
Mississauga, ON L4W 3R7, Canada  
Tel: (905) 624-0301  
Fax: (905) 624-5547

### **Halton Global Services**

1750 Valley View Ln, Ste. 100  
Farmers Branch, TX 75234, USA  
Tel: (972) 419-5100  
Fax: (972) 419-5101

[www.halton.com](http://www.halton.com)