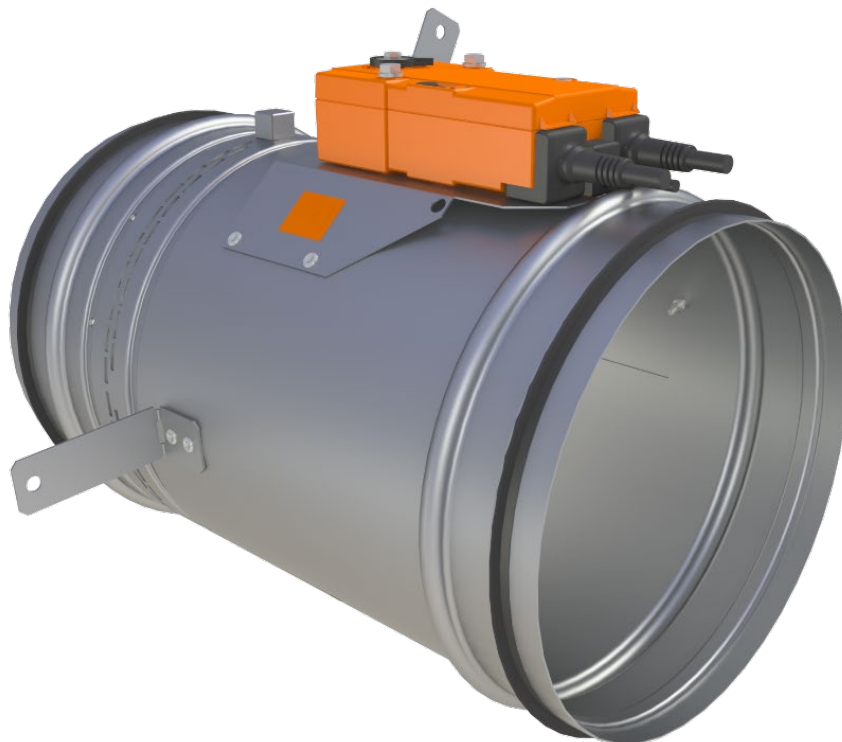


Fire Damper Installation Guide for Halton Exe Competent Circular (ECC)



Fire resistance class **EI 60 (v_e h_o i↔o) S**

CE certificate of Constancy of Performance No: 1391-CPR-2018/0203

Declaration of Performance No: 10026-ECC-2019/01/01

Tested according to fire test standard 1366-2

Contents

1 Introduction	3
1.1 About this document.....	3
1.2 Document copyright and disclaimer	3
2 Dimensions	4
2.1 Damper dimensions (mm)	4
2.2 Size of installation opening	4
2.3 Minimum distances	5
3 Installation.....	6
3.1 Main points before you start.....	6
3.2 Mounting the fire damper	7
3.2.1 Use of installation holders	7
3.2.2 Solid wall construction (EI 60 S).....	8
3.2.3 Lightweight wall construction (EI 60 S).....	9
3.2.4 Solid floor construction (EI 60 S)	10
3.3 Fastening the fire damper	11
3.3.1 Horizontal duct	11
3.3.2 Vertical duct	12
4 Key technical data.....	14
4.1 Wiring	14
4.1.1 Belimo, AC/DC 24 V, open-close	14
4.1.2 Belimo, AC 230 V, open-close.....	15
4.2 Actuators	16

1 Introduction

1.1 About this document

This guide provides guidelines for installing the fire damper.

1.2 Document copyright and disclaimer

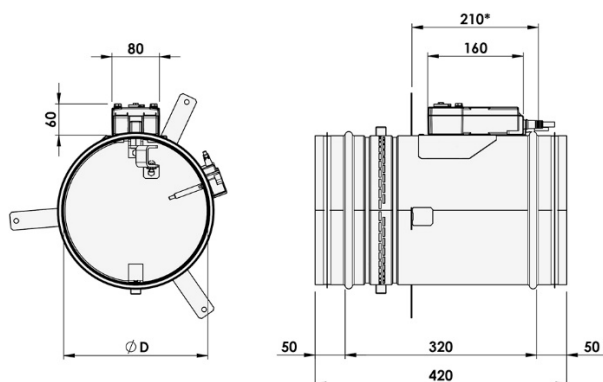
This document remains the sole property of Halton and may not be duplicated, borrowed, copied, amended, modified, reproduced, transmitted or distributed to any third party without the prior written consent of Halton. Any information held in this document or associated materials may only be used for the purpose specified in this document.

Halton disclaims any and all liability related to this document. Halton gives no explicit or implied warranties in terms of this document. Any permitted use of the information included herein is at your own risk. Halton may amend or replace the information included in this document at its sole discretion without further notice and liability.

All intellectual property rights or applications thereof, including without limitation copyright, model rights, patents, trade secrets, trade names, trademarks, know-how (whether registered or unregistered) attributable to this document remain the sole and exclusive property of Halton. No rights or licenses are granted.

2 Dimensions

2.1 Damper dimensions (mm)



NS	ϕD
100	99
125	124
160	159
200	199
250	249
315	314
355	354
400	399

* Space reservation for fire damper

2.2 Size of installation opening

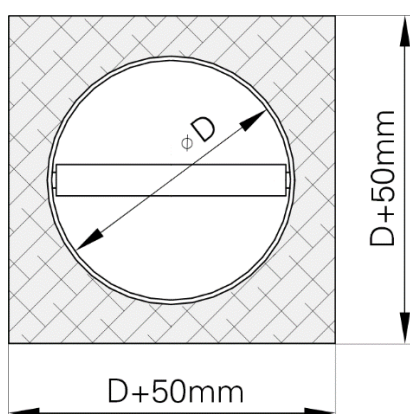


Fig. 1. Installation opening, rectangular

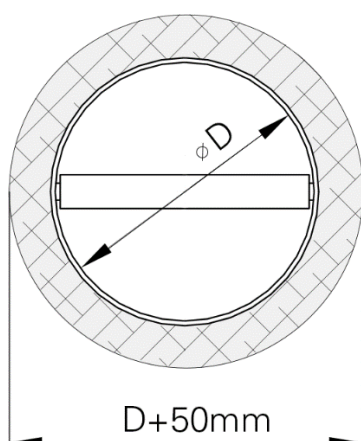


Fig. 2. Installation opening, circular

2.3 Minimum distances

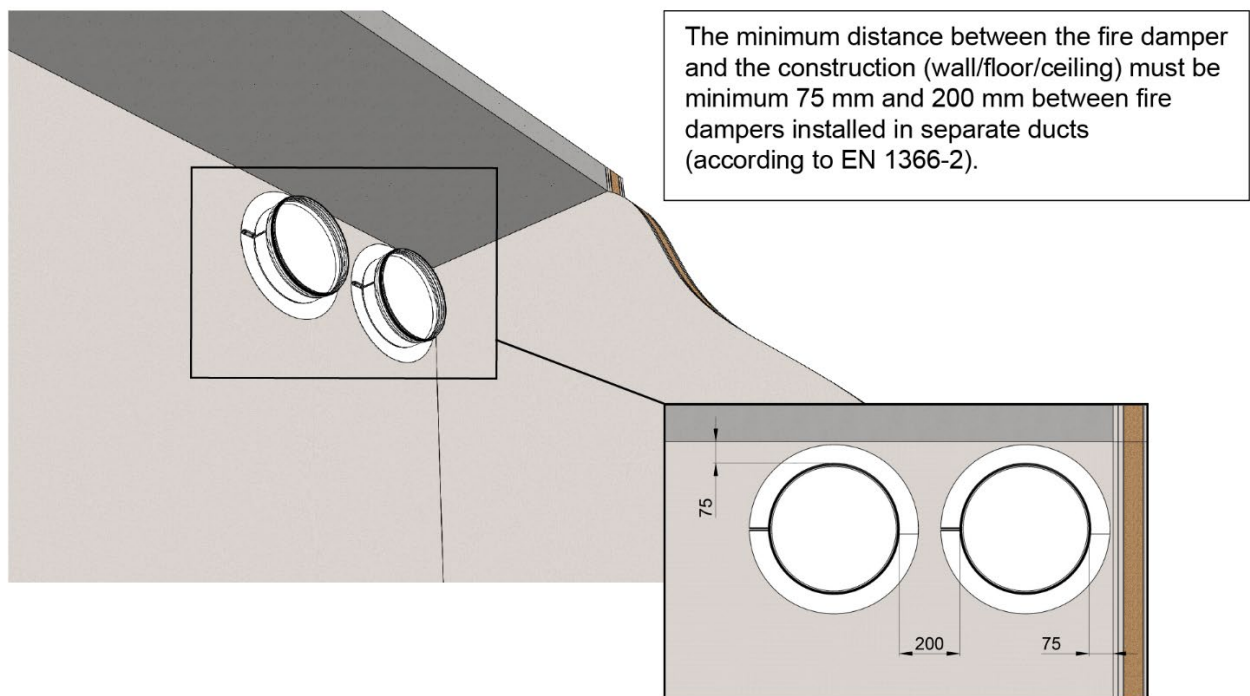


Fig. 3. The distance between the fire damper and construction

3 Installation

3.1 Main points before you start

1. Halton manufactures and supplies only the fire damper element of any installation method. All other components or materials mentioned in this guide must be supplied and fitted by the appropriate contractor as accepted best practice, regulation or guidelines for the country in which they are being installed.
2. Perform visual inspection of the condition of the damper before installation.
3. Operation of the damper does not depend on the direction of air circulation.
4. Spindle of the blade and the operating model can be installed in any position (360 °) in wall installation.
5. The blade must be in close position during installation.
6. The control mechanism must be protected against damage and pollution during installation process with e.g. plastic cover.
7. For installation of Halton fire dampers, all ductwork must be installed so that there is no load on the fire damper. Connections to ductwork should be performed as accepted best practice, regulation or guidelines for the country in which they are being installed (e.g. for the UK this is DW144).
8. Functionality of the damper must be tested before and after installation and after filling the gap between damper and construction.
9. Fill the gap between damper and construction with mortar or gypsum, e.g. HILTI, SIKLA, MÜPRO etc.

Note: The minimum recommended inspection period is every 6 months or according to the building code.

3.2 Mounting the fire damper

3.2.1 Use of installation holders

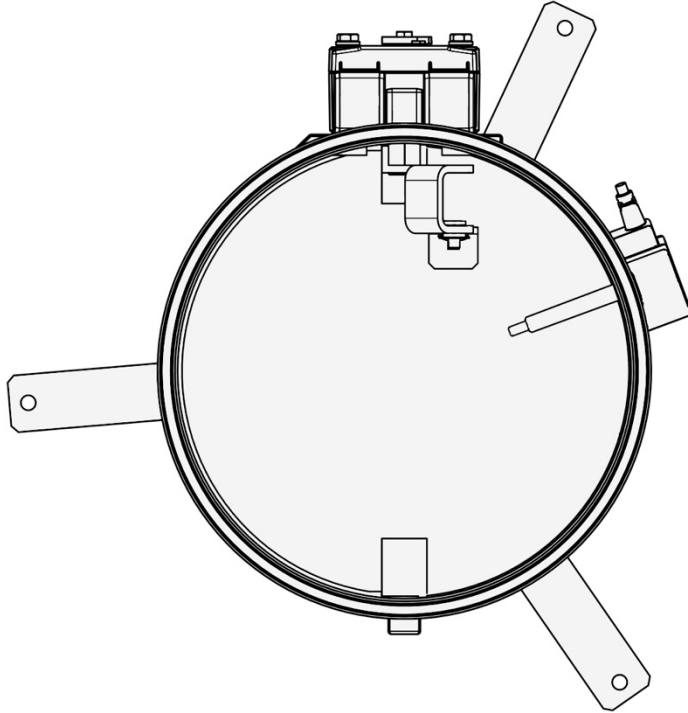


Fig. 4.

The holders on side of the fire damper are used for fixing the fire damper to the centre of the mounting hole. Bend all holders to an angle of 90° (see semicircular cuts on holder) and place the fire damper in the centre of the mounting hole. Fasten the holders to construction with screws, as anchors.

3.2.2 Solid wall construction (EI 60 S)

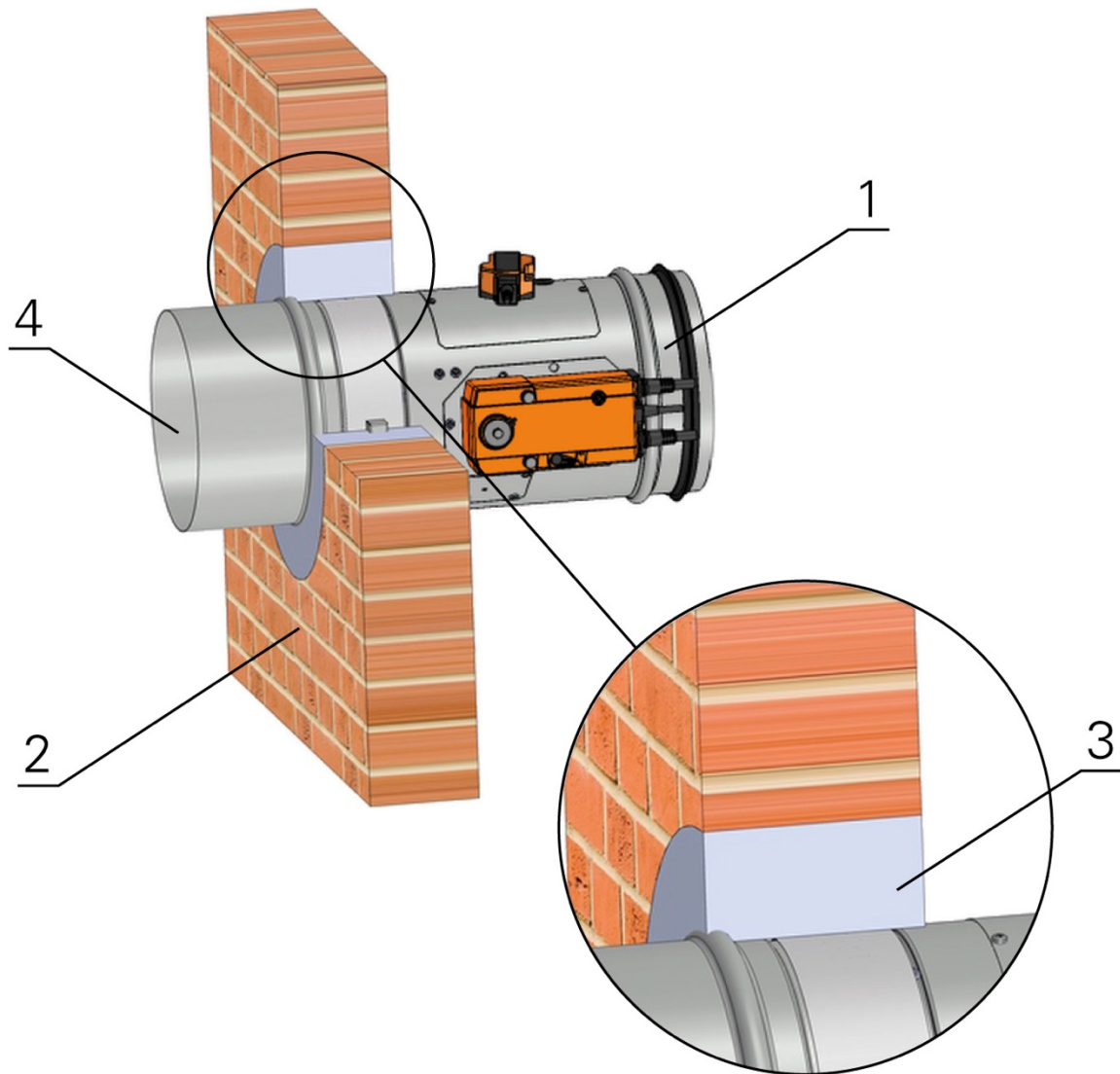


Fig. 5. Concrete or masonry structure

Key:

1. Halton fire damper
2. Solid wall construction
3. Mortar or gypsum
4. Duct

3.2.3 Lightweight wall construction (EI 60 S)

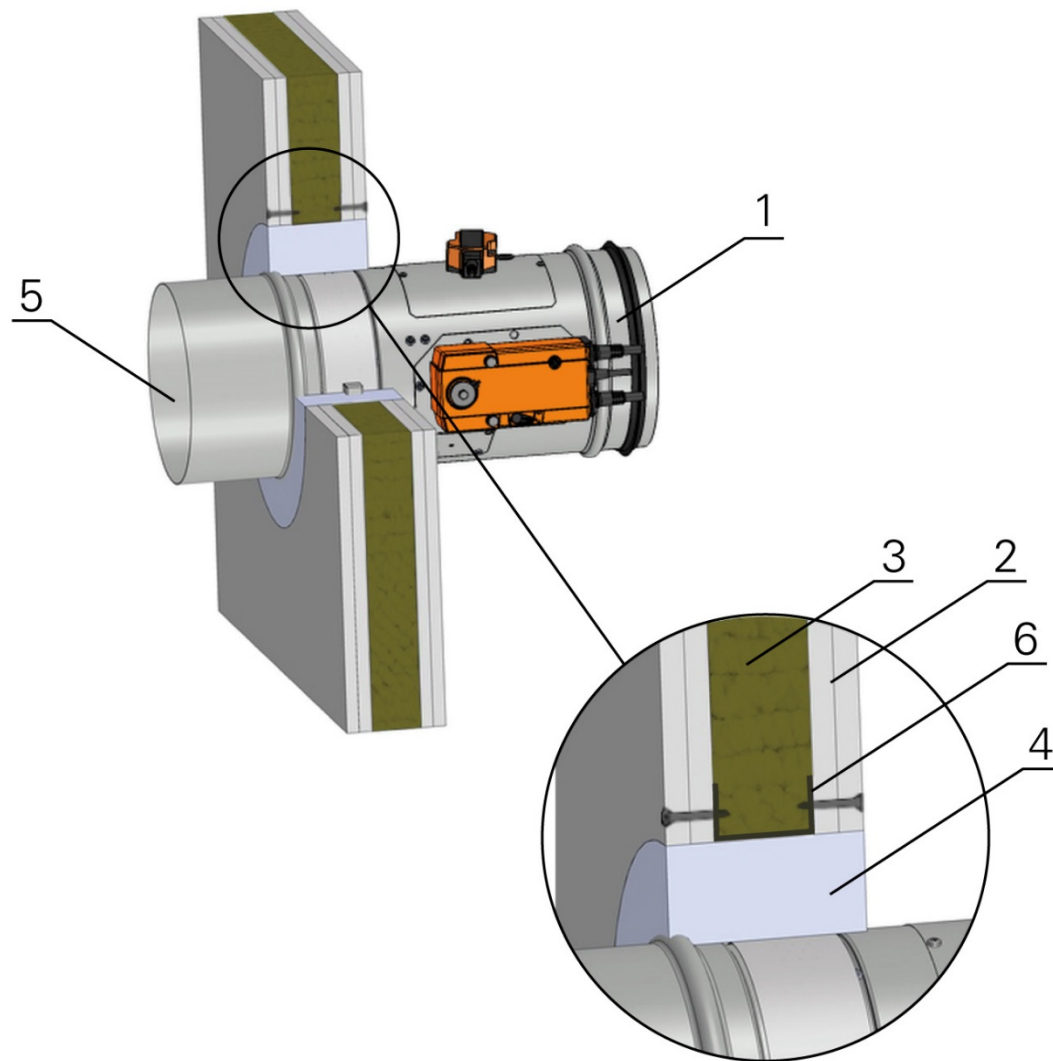


Fig. 6.

Key:

1. Halton fire damper
2. Gypsum plate
3. Fire resistant insulation
4. Mortar or gypsum
5. Duct
6. Steel profile *)

*) Installation opening must be reinforced by steel profile (UW, CW). Profile is fixed by screws $\geq 3,5$ mm with corresponding length. Distance between screws ≤ 200 mm

3.2.4 Solid floor construction (EI 60 S)

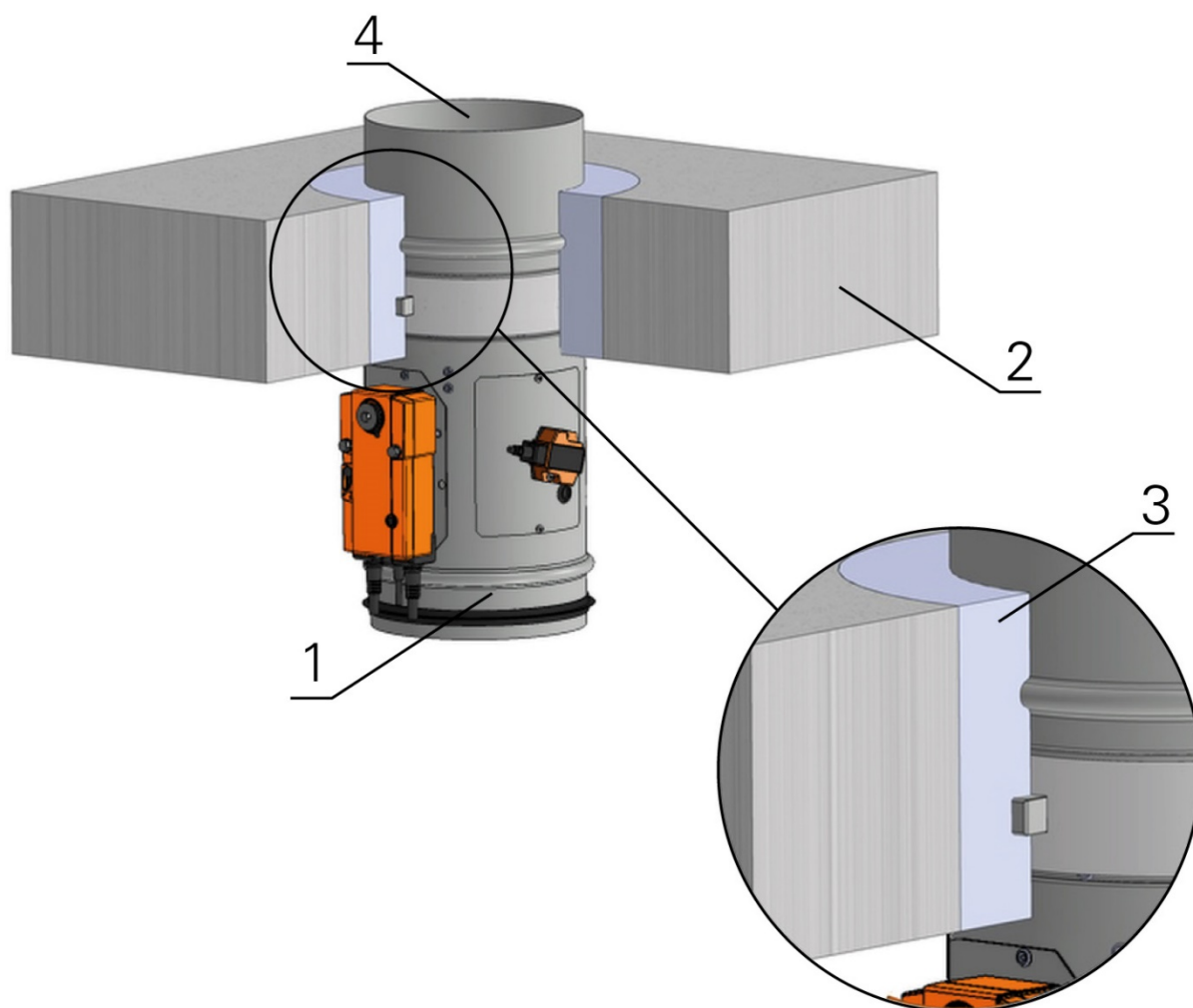


Fig. 7. Concrete or masonry structure

Key:

1. Halton fire damper
2. Solid floor construction
3. Mortar or gypsum
4. Duct

Note: Thickness of the floor min. 110 mm - concrete/min. 125 mm - aerated concrete.

3.3 Fastening the fire damper

3.3.1 Horizontal duct

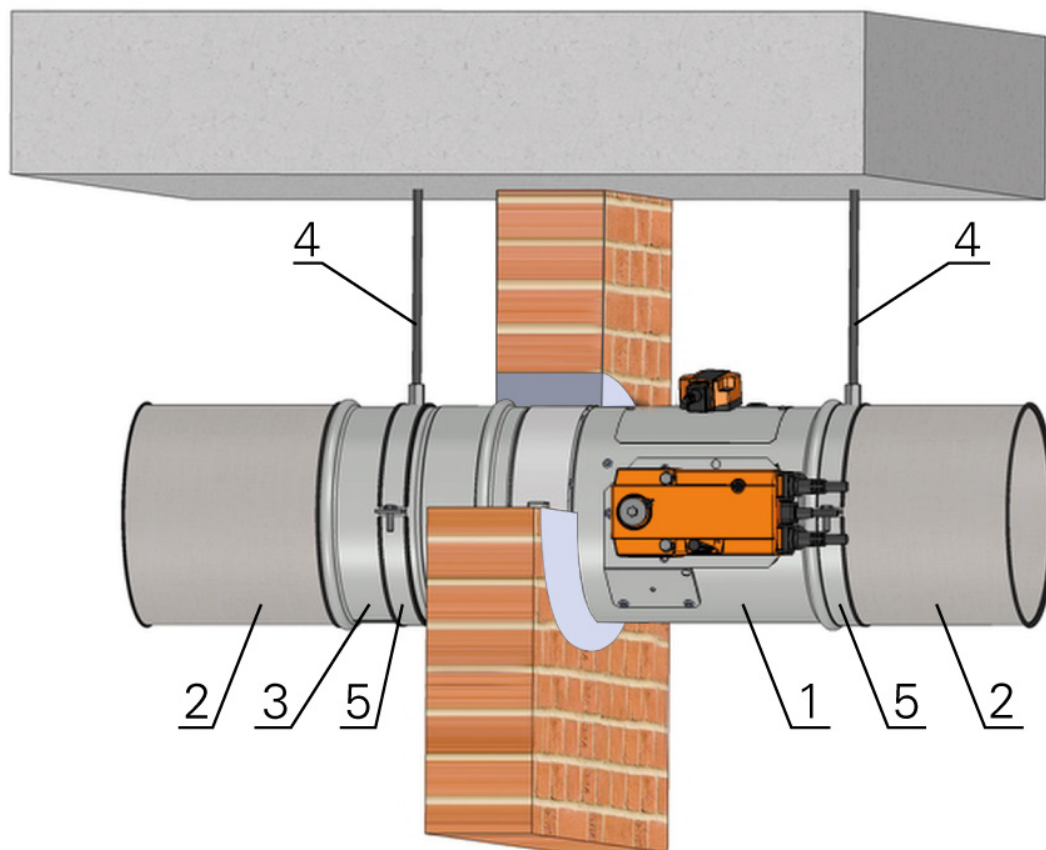


Fig. 8.

Key:

1. Halton fire damper
2. Duct
3. Duct extension
4. Threaded rod
5. Suspension ring

Examples of used materials: HILTI, SIKLA, MÜPRO etc.

3.3.2 Vertical duct

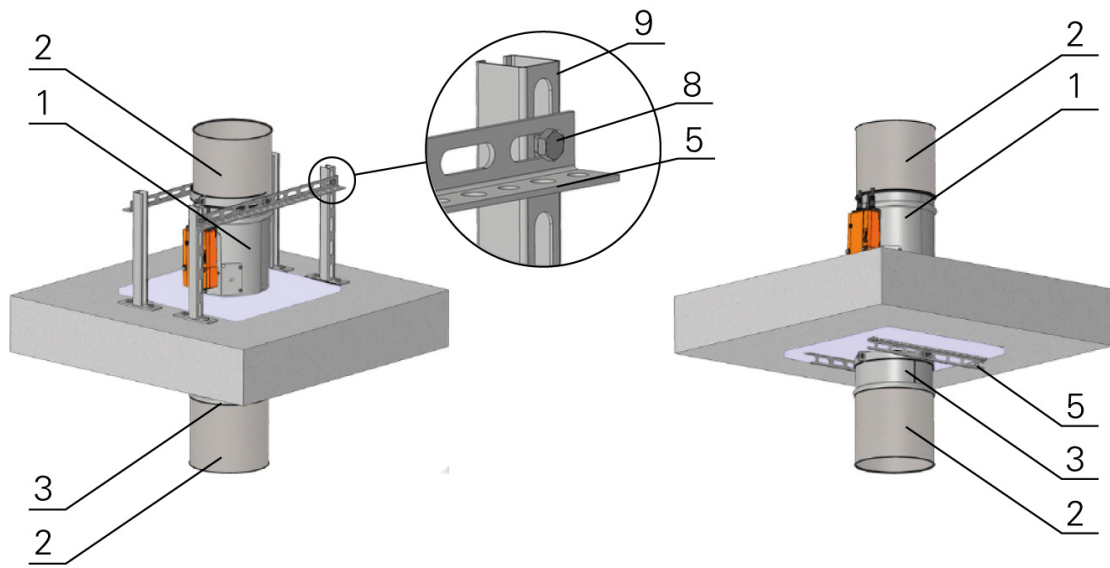


Fig. 9. Actuator above the floor construction

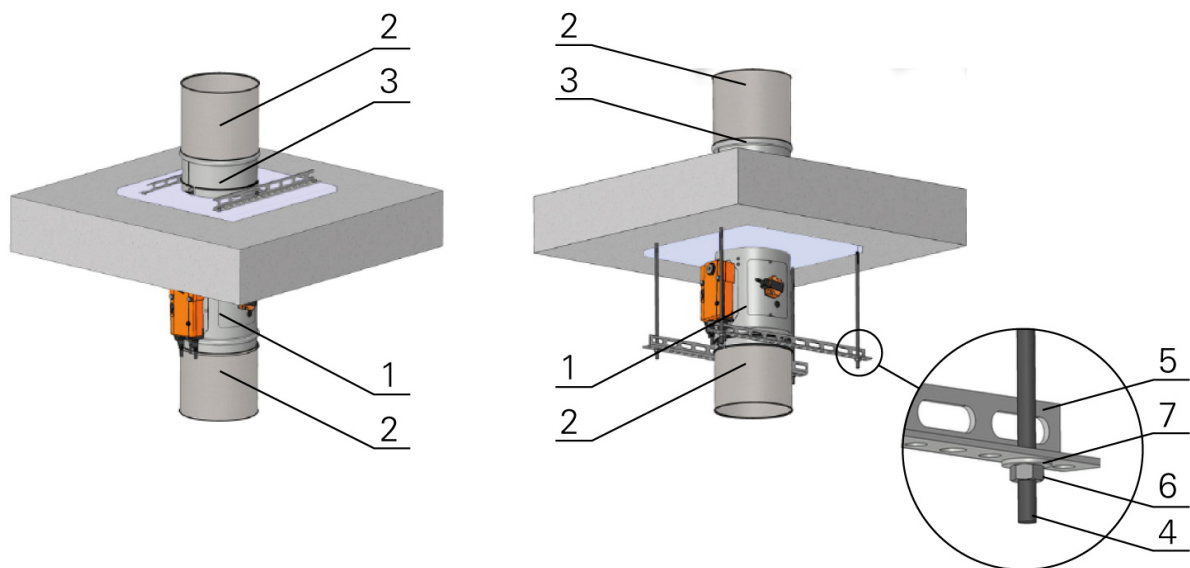


Fig. 10. Actuator below the floor construction

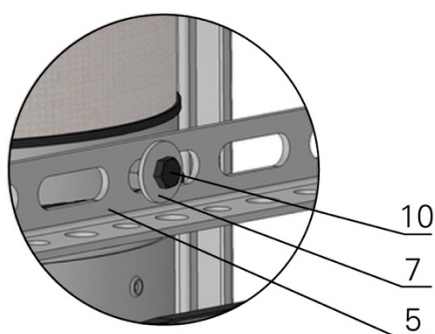


Fig. 11. Suspension ring and mounting rail connected by bolt

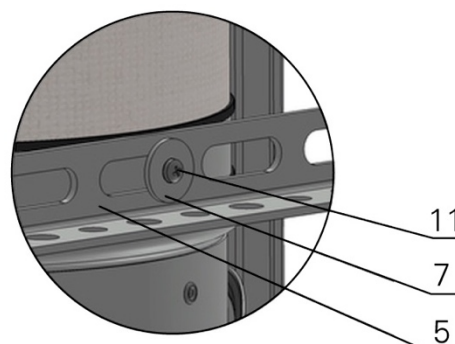


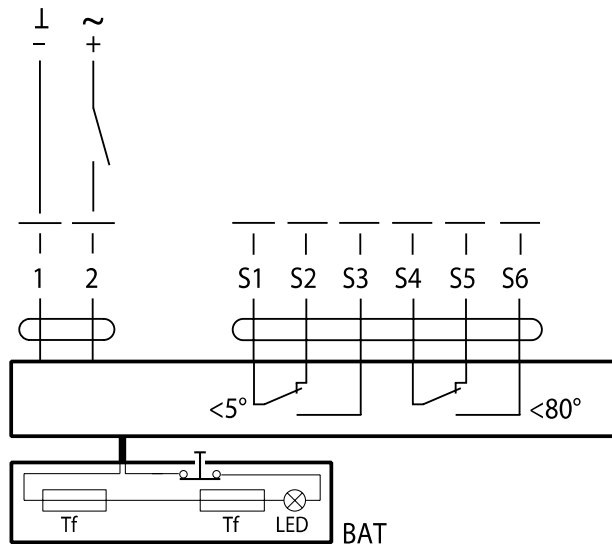
Fig. 12. Suspension ring and mounting rail connected by screw or rivet

1. Halton fire damper
2. Duct
3. Duct extension
4. Threaded rod
5. Mounting rail
6. Nut
7. Washer
8. Screw connection
9. Mounting profile
10. Bolt
11. Screw or rivet

4 Key technical data

4.1 Wiring

4.1.1 Belimo, AC/DC 24 V, open-close



Cable colours

No	Colour
1	Black
2	Red
S1	Violet
S2	Red
S3	White
S4	Orange
S5	Pink
S6	Grey
Tf	Terminal fuse

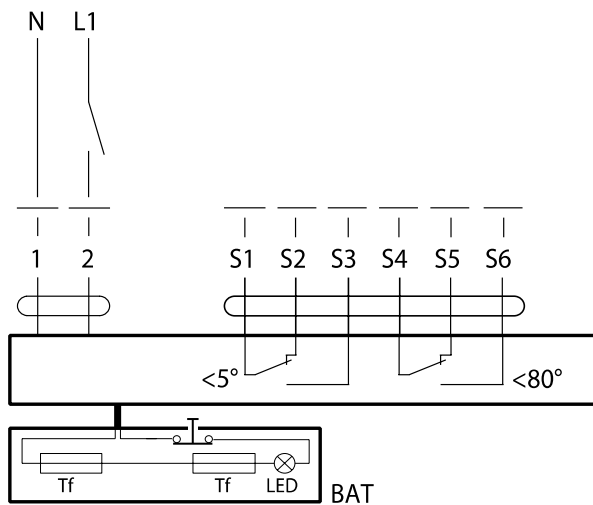
Electrical installation



Notes

- Connection via safety isolating transformer
- Parallel connection of other actuators possible. Observe the performance data.
- Combination of power supply voltage and safety extra-low voltage not permitted at the both auxiliary switches.

4.1.2 Belimo, AC 230 V, open-close



Cable colours

No	Colour
1	Blue
2	Brown
S1	Violet
S2	Red
S3	White
S4	Orange
S5	Pink
S6	Grey
Tf	Terminal fuse

Electrical installation



Notes

- Caution: Power supply voltage!
- The actuator must be protected by a fuse that does not exceed 16 A.
- Parallel connection of other actuators possible. Observe the performance data.
- Combination of power supply voltage and safety extra-low voltage not permitted at the both auxiliary switches.

4.2 Actuators

Actuating mechanism, Belimo	BFL 230-T	BFL 24-T
Nominal voltage	AC 230 V 50/60 Hz	AC/DC 24 V 50/60 Hz
Power consumption - in operation - at rest	3.5/5 W 1.1/2,1 W	25./4 W 0.8/1,4 W
Power consumption for wire sizing note	6.5/10 VA (I _{max} 4 A @ 5 ms)	4/6 VA (I _{max} 8,3 A @ 5 ms)
Protection class	II	III
Degree of protection IEC/EN	IP 54	
Running time - in operation - spring return	< 60 s / 90 ° 20 s @ -10 ... 50 °C @ < 60 s -30...-10 °C	
Ambient temperature - normal duty - safety duty - non-operating temperature	- 30 °C...55 °C The safe position will be attained up to max. 75 °C - 40 °C...55 °C	
Connecting - in operation - auxiliary switch	Cable 1 m, 2 x 0,75 mm ² (halogen-free) Cable 1 m, 6 x 0,75 mm ² (halogen-free)	
Response temperature thermal fuse	Duct outside temperature 72 °C Duct inside temperature 72 °C	