

Detect a Potential Fire Before Your Fire  
Suppression System Activates



**Halton FireWatch**

Integrated Solution with Halton SafeGuard System





Halton introduces the first of its kind Fire Warning system that never sleeps, **Halton FireWatch!**

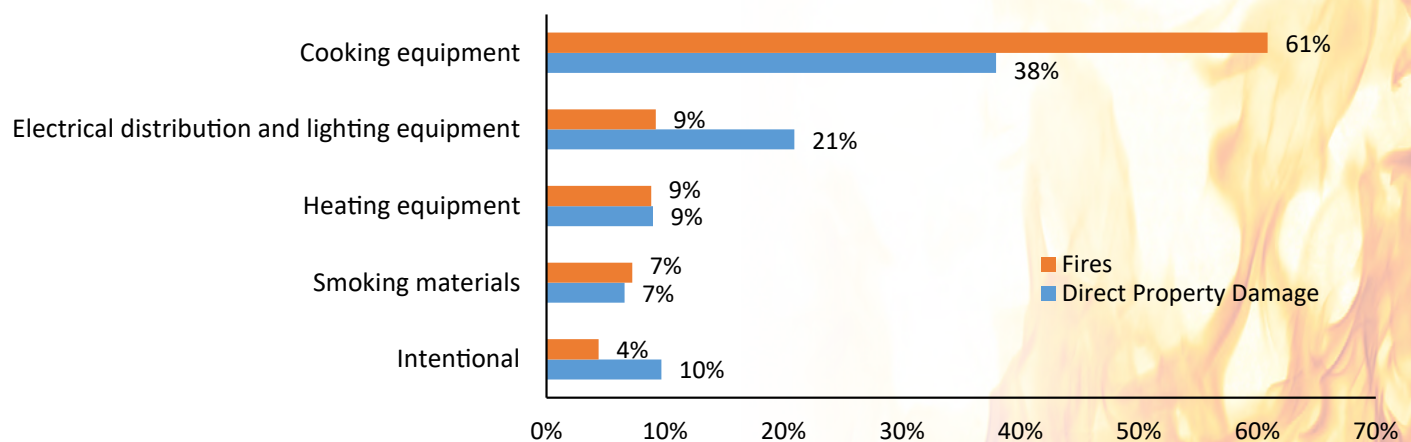
This feature is part of **Halton's SafeGuard** controls platform addressing a food service facility's Sustainability, Wellbeing, and Fire Risk.



# Did you know that between 2010 and 2014, an estimated average of 7,410 structure fires in eating and drinking establishments were reported to U.S. fire departments each year!

Just think about all the smaller fires and fire system discharges that were not reported!

## Structure Fires in Eating and Drinking Establishments by Major Cause 2010-2014 (Top 5 shown)



**Cooking equipment** was the leading cause of fires in these properties, accounting for 3 out of 5 fires.\* What if you could have a system that identifies when conditions are favorable for a fire BEFORE it ignites!

- Deep fryers were involved in one of five fires (21%) and ranges or cooktops were involved in 14% of fires.
- Two-thirds (68%) of fires in eating and drinking establishments were small and did not spread beyond the object of origin.
- Cooking materials were the item first ignited in 43% of the fires in eating and drinking establishments.
- Failure to clean was a factor in 22% of the fires in these properties.

These fires resulted in an associated annual loss of:

- Three civilian deaths
- 110 civilian injuries
- \$165 million in property damage

\* NFPA research publication - Structure Fires in Eating and Drinking Establishments Fact Sheet

# Halton FireWatch

Halton Fire Watch is easily retrofitted to existing exhaust hoods and consists of temperature sensors to continually monitor exhaust plenum temperatures for abnormalities that are a precursor to a fire event. The system will alert the user of conditions that increase the likelihood of a fire and prompt you to take action before the discharge of the fire suppression system.

When an alarm is triggered, touchscreen and visual indicator alerts user to the event and the necessary actions to take to avoid a shutdown of equipment or reset if necessary.

Users can manually restore power on site. Instructions explaining why power is disconnected, and how to restore power are shown on the touch screen. Both power disconnection and manual power restore events are recorded locally at the controller level and on the cloud.

Power can be restored manually when alarm conditions are cleared. *(if so equipped)*



Detect a Potential Fire Before  
Your Fire Suppression System  
Activates





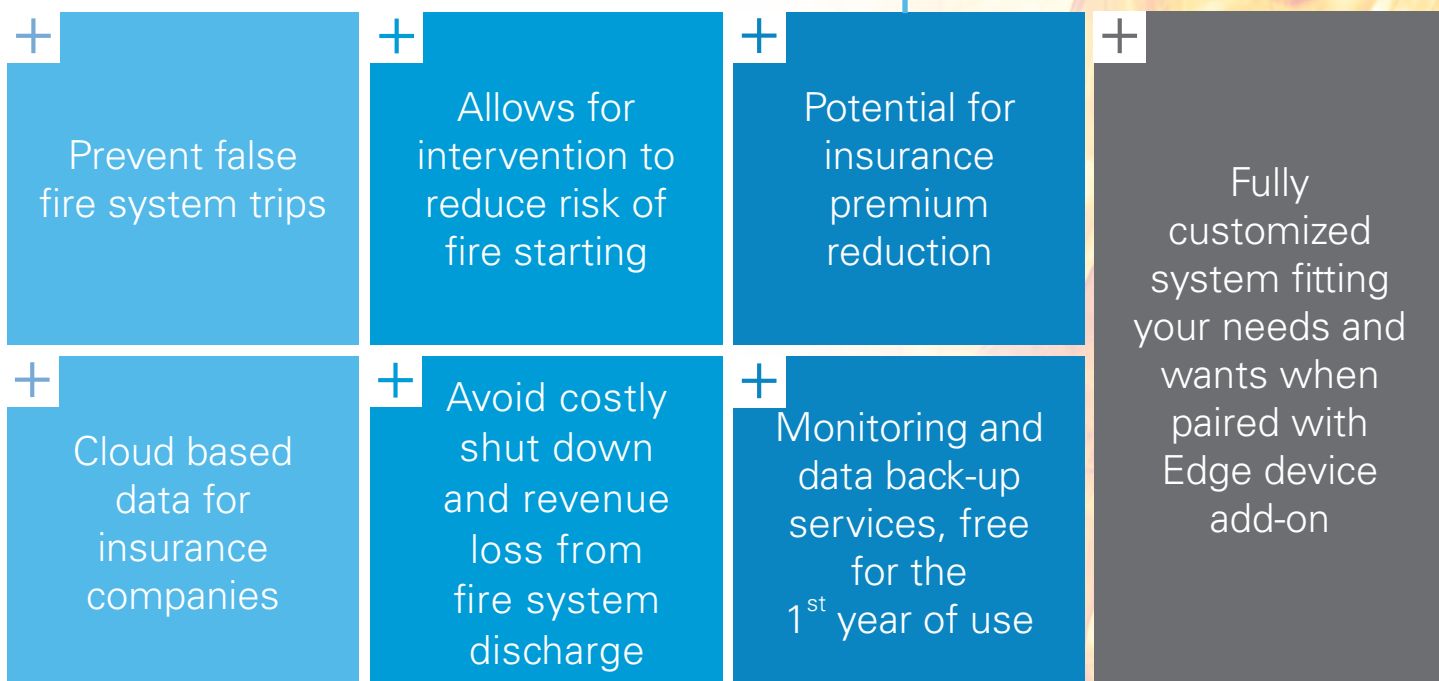
## Halton **FireWatch**, providing a critical layer of monitoring to mitigate fire risk

### The system continuously monitors exhaust plenum temperatures.

Halton FireWatch is a 24/7 electronic fire warning system with data backup. It monitors hood plenum exhaust temperature. When an anomaly is detected, a local two stage warning is initiated.

- **Stage 1** - Stage 1, A visual indicator at hood and touch screen.
  - Allows for intervention by kitchen staff to address alarm
- **Stage 2** - If the warning is not acted upon, both an audible and visual alarm are activated, the fuel source is shut off to the appliances *(Equipment should be manually turned off or if equipped with optional Equipment Shut Down feature, the system will automatically shut off appliances)*
- A quick reset of appliances once the dangerous conditions are cleared.

### Providing peace of mind for your food service facility!



## ABOUT US

Halton Group is the global technology leader in indoor air solutions for demanding spaces. The company develops and provides solutions for commercial and public premises, healthcare institutions and laboratories, professional kitchens and restaurants as well as energy production environments and marine vessels. Halton's mission is to provide its end-users with safe, comfortable, and productive indoor environments that are energy-efficient and comply with sustainable principles.

### **Halton Company**

101 Industrial Drive  
Scottsville, KY 42164, USA  
Tel: (270) 237-5600

### **Halton Indoor Climate Systems**

1021 Brevik Place  
Mississauga, ON L4W 3R7, Canada  
Tel: (905) 624-0301

### **Halton Global Services**

1750 Valley View Ln, Ste. 100  
Farmers Branch, TX 75234, USA  
Tel: (972) 419-5100

[www.halton.com](http://www.halton.com)