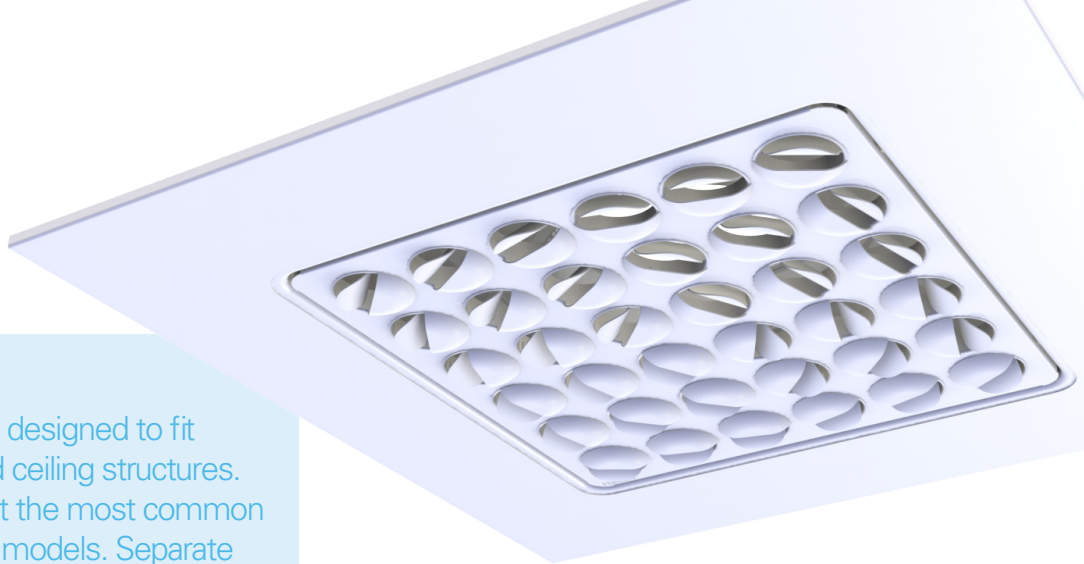




Ceiling adapters

for Halton Jaz JSC and JRC

Halton's diffuser range is designed to fit perfectly into suspended ceiling structures. The 600 x 600 models fit the most common T-lists, including narrow models. Separate ceiling adapters have been designed for smaller 420 x 420 models, in order to make ceiling integration seamless for all diffusers, regardless of the size.



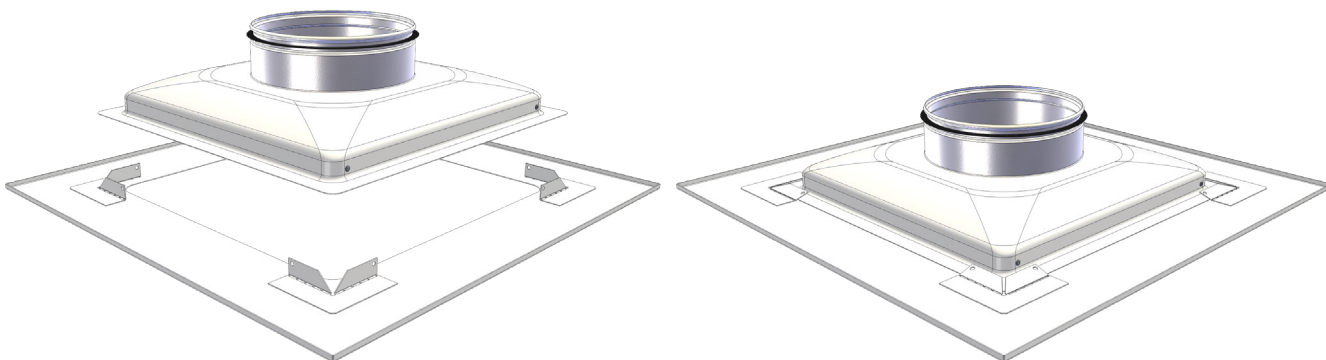
Ceiling adapters (CA) for Halton Jaz JSC and JRC are available for the most common ceiling tile models:

S1	Standard 595x595 mm	Ecophon Focus A, Rockfon A
H1	Hidden grid	Ecophon Focus Ds, Rockfon X
P1	Partly hidden grid	Ecophon Focus Dg, Rockfon M
C1	Clip-in	Dampa clip-in, square edge
R1	Recessed	Ecophon Focus E, Rockfon E, T24

Adapters for other ceiling types are available on request.

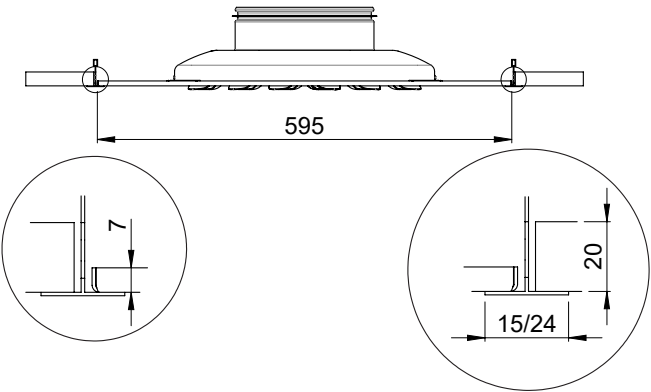
Standard colour for ceiling adapters is white RAL 9003. Other colours are available on request.

Ceiling adapter installation:

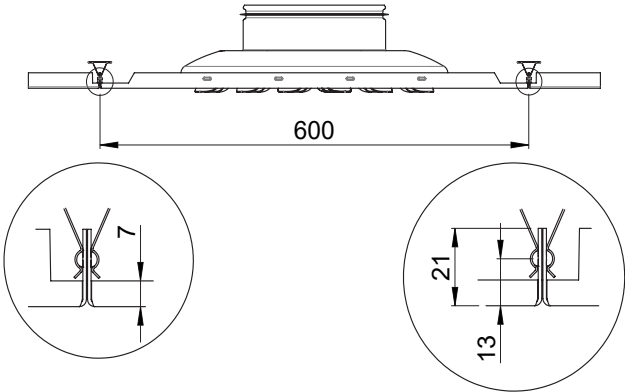


Attach the adapter to the diffuser by first bending the fasteners upwards (left), placing the diffuser on the adapter and bending the fasteners back down (right).

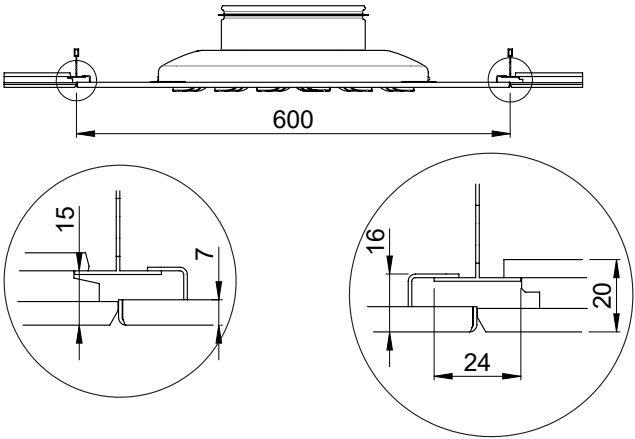
Dimensions of standard ceiling adapter options



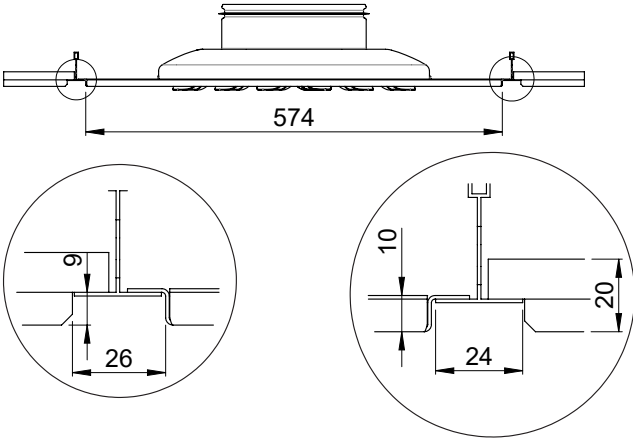
S1 Ecophon A, Rockfon A



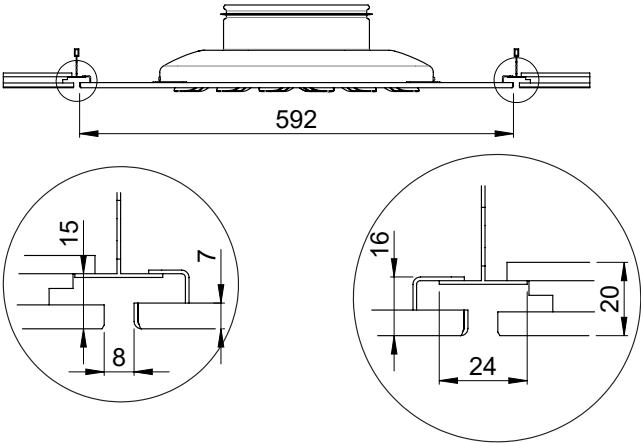
C1 Dampa clip-in



H1 Ecophon Ds, Rockfon X



R1 Ecophon E, Rockfon E, T24



P1 Ecophon Dg, Rockfon M

About us

Halton is passionate about indoor environments. We offer business-enhancing products, systems, and services for comfortable, energy-efficient, and safe environments to customers who value people's wellbeing. Halton is involved from target-setting to facility use and focuses on creating positive indoor environment experiences for people.

Contact us at:

www.halton.com