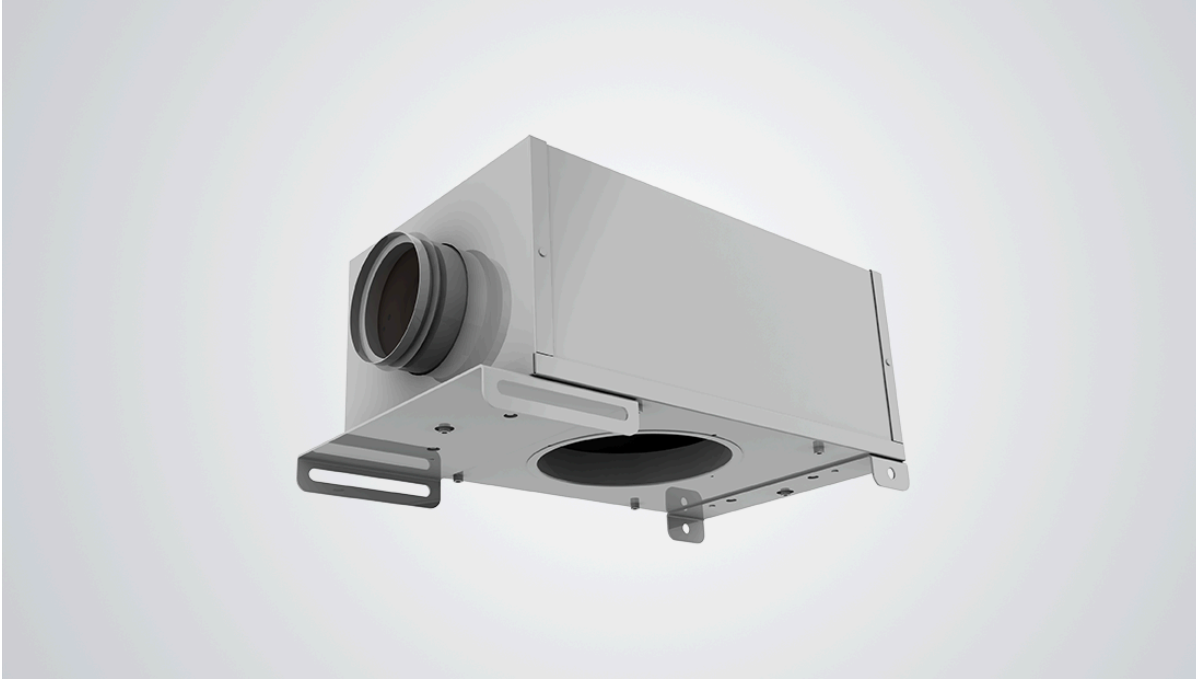


HMC – Single duct cabin unit



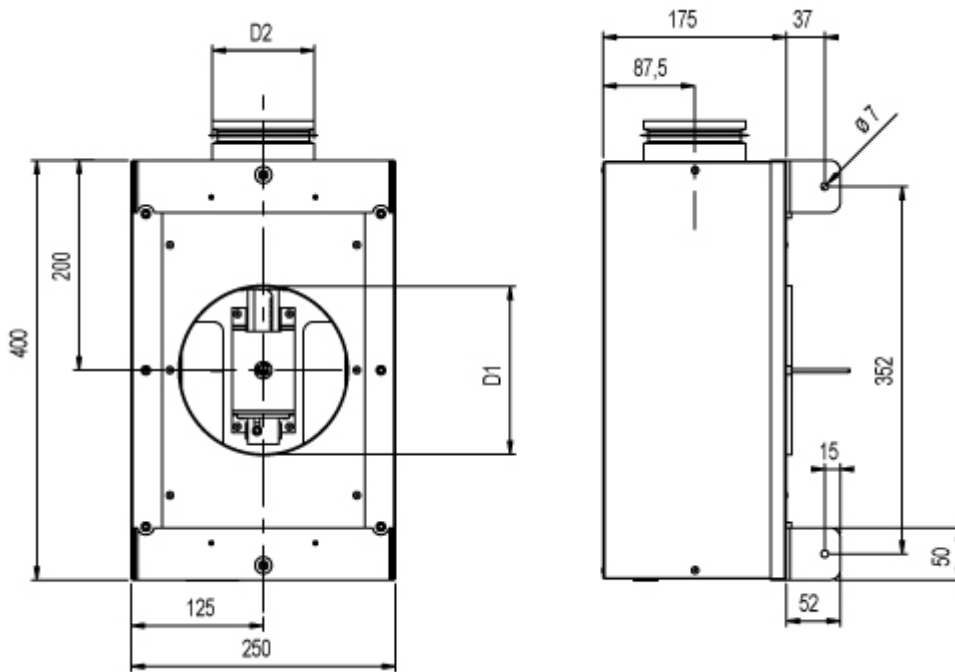
Overview

- Pressure range from 0 Pa...200 Pa
- Airflow range 0 m³/h...180 m³/h
- Airflow adjustment with diffuser knob, painted with the diffuser color
- Mechanical max/min airflow limits for easy commissioning
- Easily tailored for different types of installations
- MED approved for B-0/B-15 installations

Specification

Halton HMC is a manually operated cabin unit for single duct applications. The unit can be installed directly through one ceiling blade (300 mm). Airflow is controlled via an adjusting knob installed through the diffuser. The control mechanism has mechanical limits for minimum and maximum airflows. Airflow limits can be easily set during commissioning. HMC is recommended to be used in conjunction with Halton's TCL diffuser that is specifically designed for HMC cabin unit.

Dimensions



	B	L	H	$\varnothing D1$ male/female	$\varnothing D2$ male
HMC	250	400	175	159/161	98

Note:
 Male connection: outer dimensions
 Female connection: inner dimensions

Weight

HMC cabin unit without a diffuser weights 6,2 kg.

Material

PART	MATERIAL
Casing	Hot galvanised steel or EN 1.4404 (AISI316L) available as an option
Spigots	Hot galvanised steel and EPDM rubber or EN 1.4404 (AISI316L) available as an option
Insulation	Mineral wool, S = 25 mm, MED approved

Function

Airflow is controlled via an adjusting knob installed through the diffuser. The control mechanism has mechanical limits for minimum and maximum airflows.

Installation

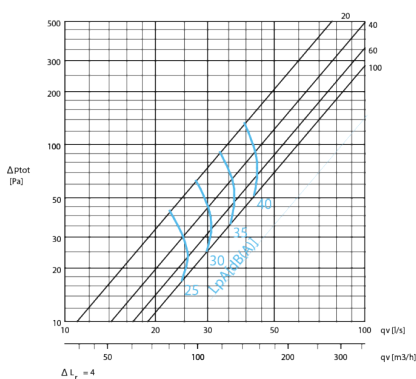
HMC can be installed directly through one ceiling blade.

Adjustment

The supply flow rate is determined by using a handheld measurement device. Adjust the minimum airflow rate by rotating the D-shape bar until the desired setting is achieved. Move the minimum airflow mechanical limiter against the stand and tighten socket cap screw. Adjust the maximum airflow rate by rotating the D-shape bar until desired setting is achieved. Move the maximum airflow mechanical limiter against the stand and tighten socket cap screw.

Performance Data

Pressure drop and sound levels (cabin sound absorption 4 dB(A))



Sound attenuation (dB)

	f(Hz)	63	125	250	500	1000	2000	4000	8000
HMC-100	Ω_L (dB)	3,7	4,1	12,4	21,5	23,8	33,4	34,9	35,2

Ω_L : Sound attenuation not including end reflection

Sound attenuation (dB) with TCL-160 diffuser

	f(Hz)	63	125	250	500	1000	2000	4000	8000
HMC-100 with TCL-160	Ω_L (dB)	3,7	6,4	16,9	21,7	31	41,2	35,7	36,8

Ω_L : Sound attenuation not including end reflection