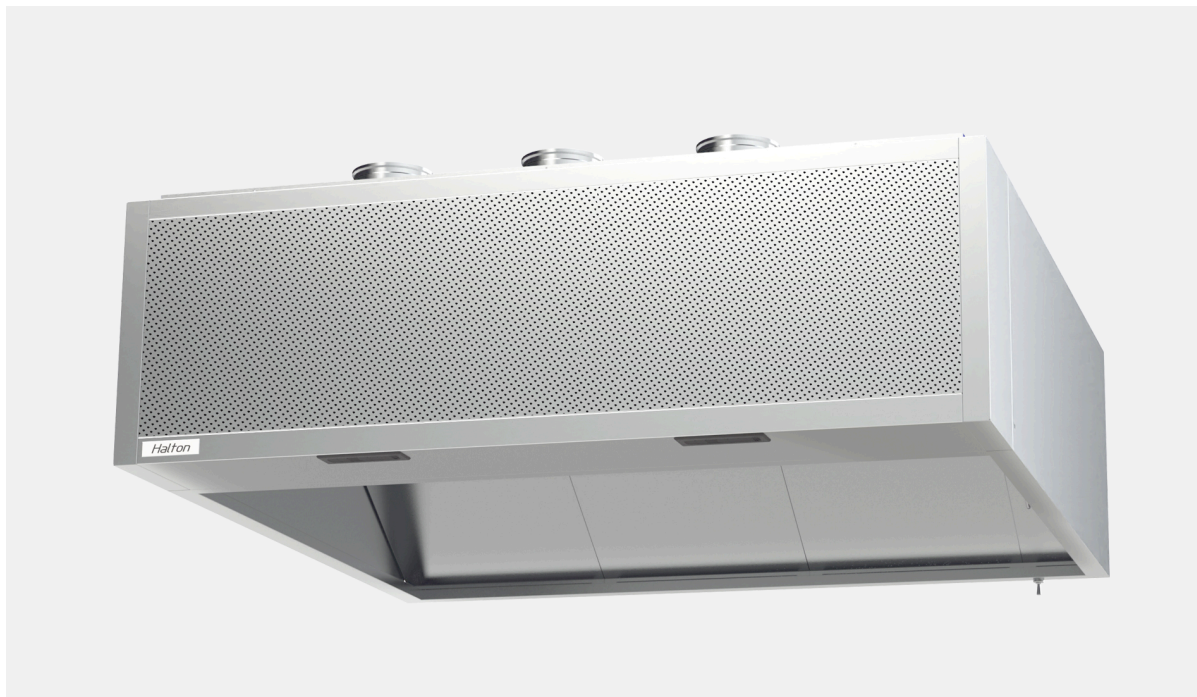


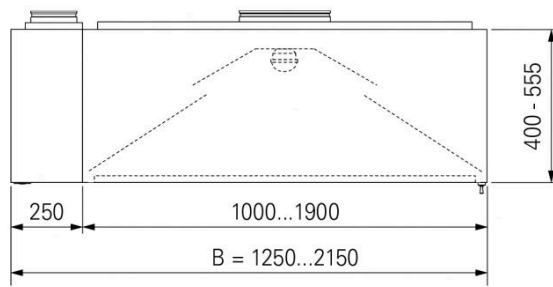
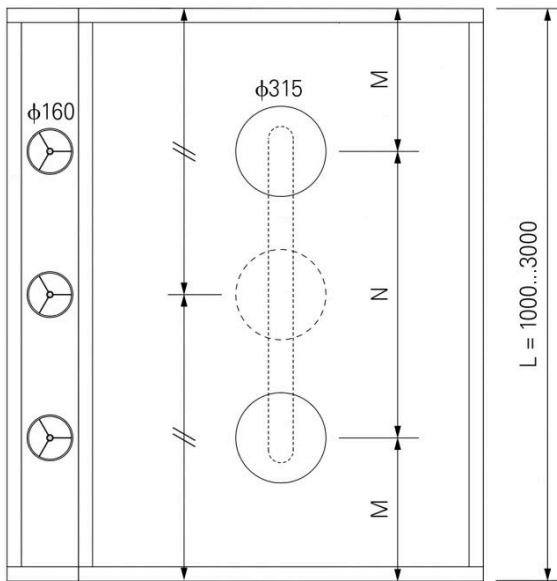
# KVD – Hood for dishwashing areas (CE)



## Overview

- Better hygiene thanks to less condensation in the extract ducts.
- Better capture efficiency and comfort for the staff thanks to a low-velocity diffuser built into the front.
- Deflectors of max 500 mm width to be easy to clean in a dishwasher and removable without tool.
- Surface LED light fitting (IP54, IK10). DALI compatible power supply as an option.
- Quick and easy commissioning. Hoods delivered “ready to install”, with all accessories included, such as light fitting, T.A.B.™ taps and dampers for quick balancing on-site.
- Sturdier and easier to clean- Less parts and less joints. Stainless steel construction.

# Dimensions



L	M	N
1000	-	-
1500	375	750
2000	500	1000
2500	500	1250
3000	500	1500

- Above 3100 mm, hoods are an assembly of separate sections to make transportation and site handling easier.
- Rectangular connections on request.