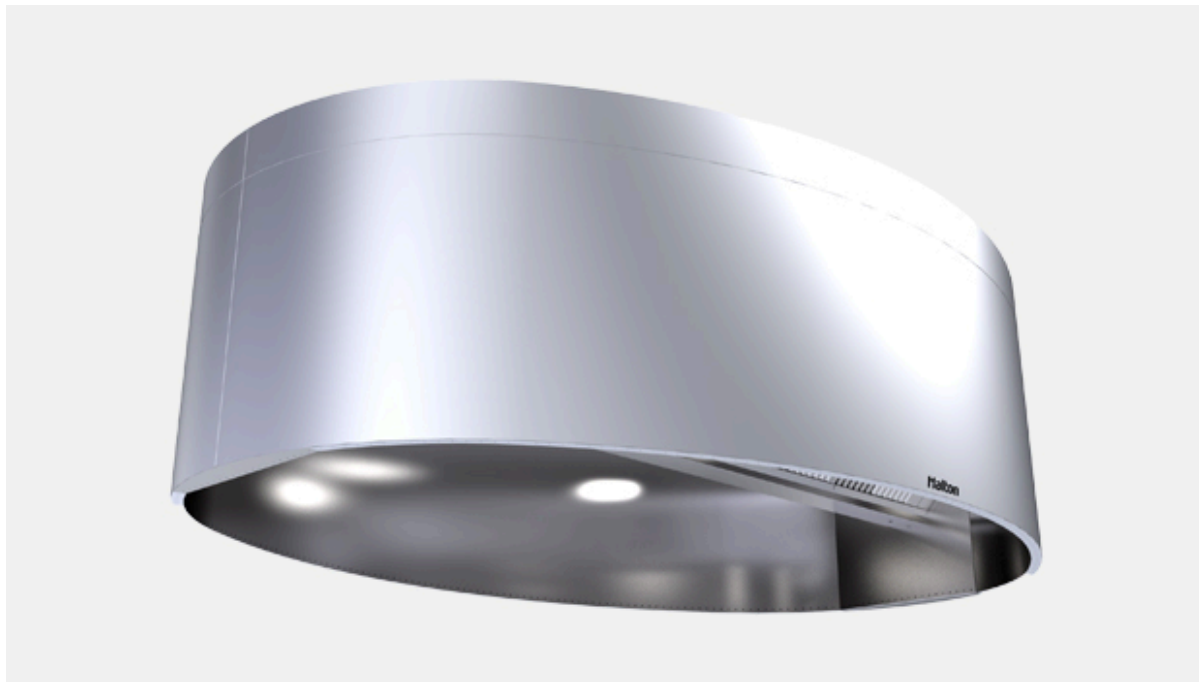


KVO – Capture Jet™ oval island exhaust hood (ETL)



Overview

- Improved indoor air quality with reduced energy use. Halton Capture Jet™ with Side-Jet technology reduces the exhaust airflow rates required and improves the capture and containment efficiency of the hood.
- High-efficiency grease filtration using UL and NSF classified Halton KSA multi-cyclone filters for removal of up to 95% of particles with a size of 8 microns per ASTM F2519.
- H.E.L.P.™ computer design program for exhaust airflow and kitchen air conditioning load calculations available.
- T.A.B.™ (testing and balancing) ports, which allow accurate and effective commissioning.
- Halton HCL Culinary Lights provide the best visual comfort while contributing to improved safety and energy savings.
- Optional LED lights and LED dimming is available for Capture Jet hoods. Dimming is controlled by a knob on the switch panel or through Halton HMI Touch Screen.
- Stainless steel welded design.
- Special geometric designs are available in hundreds of custom powder coat finishes.

RECOMMENDED COMBINATIONS

The technologies and features integrated into the KVO hood can be combined with the following technologies or products to further improve the Energy Efficiency, Safety, Indoor Environment Quality (IEQ), or Emission Control levels.



Further, increase the energy savings and improve the working conditions of the staff

Go for [M.A.R.V.E.L.](#) energy saving technology for kitchens ventilation



Establish your kitchen wherever you chose and increase once more the energy savings

Go for [PolluStop](#) pollution control unit.



Get peace of mind by making no compromise on fire safety

Go for the factory pre-installed FSS [Fire Suppression System](#)



Optimize the ductwork cleaning costs and further improve your safety

Go for KGS [grease deposition level monitoring system](#) for ductwork

Specification

The hood shall be designed with Capture JetTM with Side-Jet technology to reduce the exhaust airflow rate required, and to improve the capture and containment efficiency of the hood, while reducing energy consumption. The Capture JetTM air shall be introduced through a special discharge panel and shall not exceed 10% of the calculated exhaust airflow. The Capture JetTM discharge velocity will be a minimum of 1500 feet per minute. Slot or grille type discharge shall not be used. The Capture JetTM shall be internally mounted with a speed control and will not require a fire damper or electronic shut down in fire mode.

Options

- Closure Panels – for canopies below ceiling level
- Backsplash
- Side Skirts
- KFR – Filter Removal Tool
- LED Lighting and LED Dimmable Lighting
- Recessed Fluorescent or Incandescent Lights
- Incandescent Globe Type Lights
- MEP – Master Electrical Panels
- Face or Remote Mounted Switch Panels
- Factory Pre-Piped Fire Protection
- Powder Coating in a Variety of Colors
- Custom/Design Stainless Steel Exterior Textures and Finishes
- Automated Balancing Damper option with M.A.R.V.E.L. II demand controls
- Hood Mounted Fire Cabinet
- M.A.R.V.E.L. Demand Control w/ VFD by Halton