

Halton TRS – Compact/conical diffuser



© Halton

Overview

- Specially designed for large enclosures
- Horizontal adjustable throw pattern with compact jet position
- Alternative throw patterns are selected by rotating the cone module
- Long throw pattern with low velocity reduction
- Alternative wide and short shape throw pattern
- Circular duct connection

Quick selection

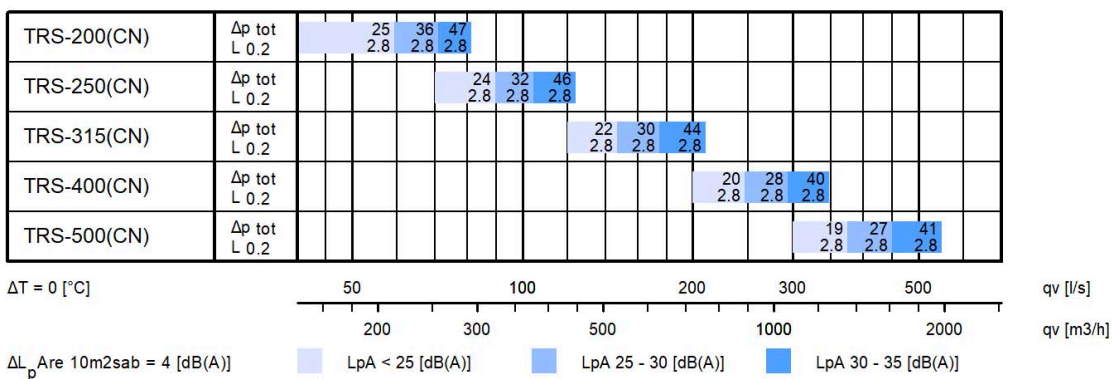


Fig.1. Halton TRS

with compact jet, narrow

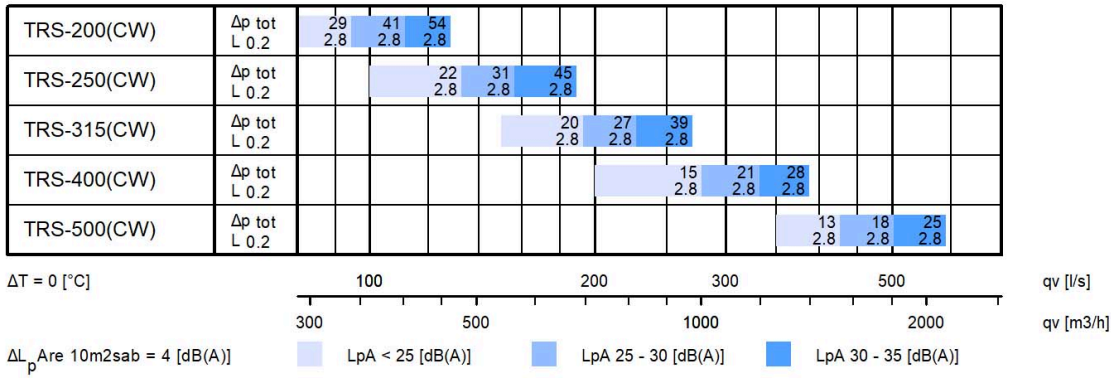
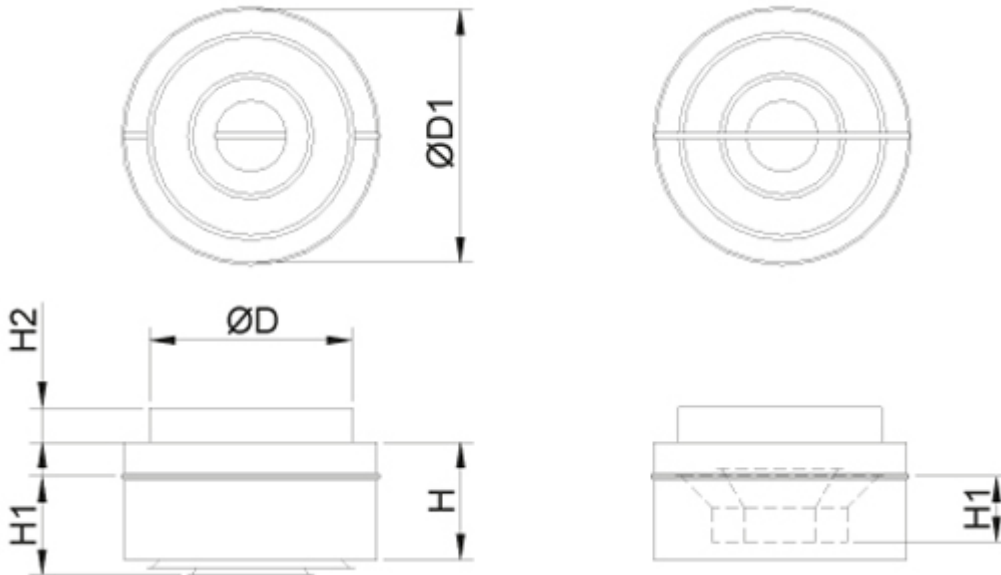


Fig.2. Halton TRS

with compact jet, wide

Dimensions



NS	H	H1 Wide	H1 Narrow	H2	ØD	ØD1
200	90	100	85	28	159	198
250	114	130	110	35	199	248
315	140	155	130	39	249	313
400	170	190	140	40	314	398
500	208	245	165	43	399	498

Weight

NS	kg
200	1.00
250	1.53
315	2.44
400	3.39
500	5.40

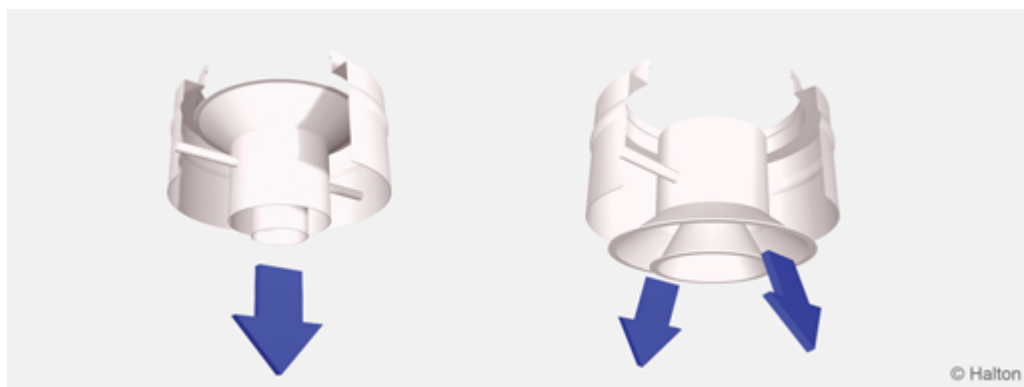
Material

Part	Material	Note
Casing	Steel	–
Cone module	Steel	–
Finishing	Painted, White (RAL 9003/30% gloss)	Special RAL colour available

Accessories

Accessory	Code	Description
Balancing plenum	TRI	For balancing, equalising the airflow and attenuating the duct noise (polyester fibre)
Balancing plenum	TRH	For balancing, equalising the airflow and attenuating the duct noise (mineral wool and polyester fibre)

Function



Narrow jet

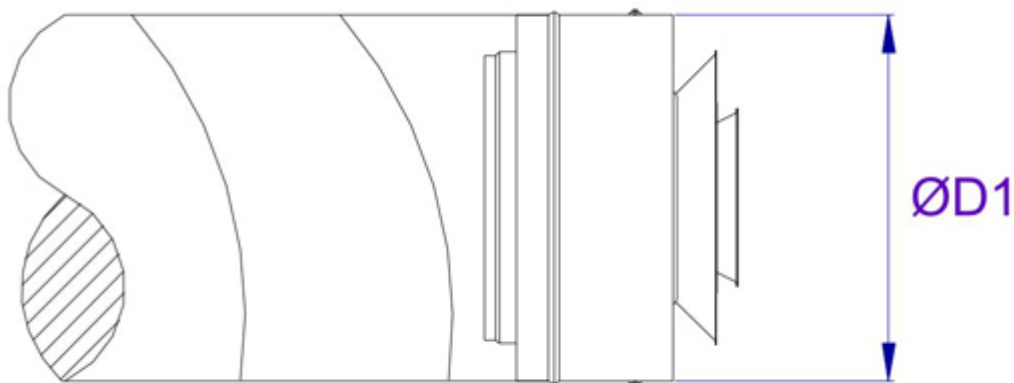
Wide jet

Air is supplied to the space through the selectable cone module
The supply air pattern can be selected for wide or narrow jet by rotating the cone module.

The narrow compact jet is used for long air pattern in heating applications and the conical wide jet for shorter air pattern in cooling applications.

The angle for narrow air pattern can be adjusted.

Installation



NS	ØD1
200	198
250	248
315	313
400	398
500	498

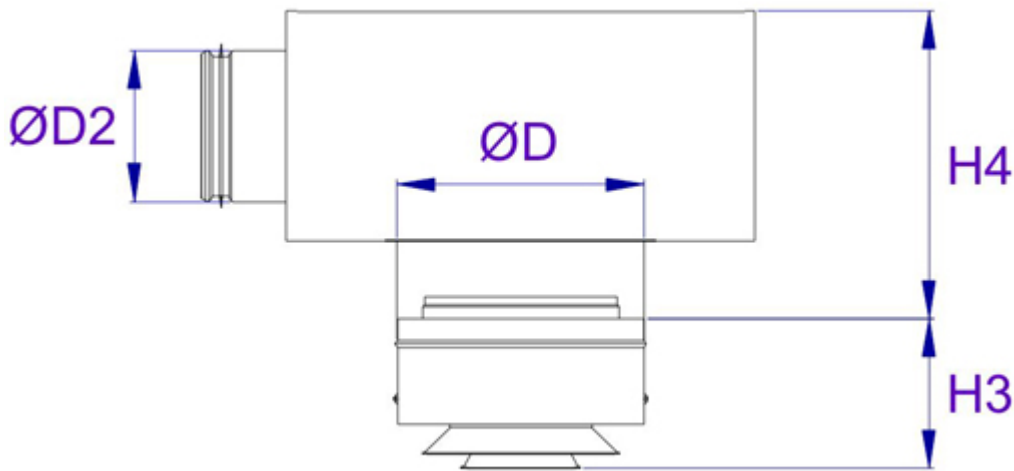
The diffuser is connected either directly to the duct by screwing or by riveting or alternatively to the Halton TRI balancing plenum.

The recommended minimum safety distance upstream of the diffuser is 3xD.

Installation with Halton TRI

The collar of Halton TRI plenum can be installed either internally in the plenum or externally onto the bottom of the plenum. The height of the unit for the external installation is presented in the table below. When the collar is installed internally, the total height H4 is reduced by 60 mm.

Note: The technical performance for the combination of supply air diffuser and plenum is presented separately for the two different installations.



NS	TRI (ØD2-ØD)	H3	H4
200	TRI-160-200	130	249
250	TRI-200-250	160	289
315	TRI-250-315	220	339
400	TRI-315-400	265	403

Adjustment

The Halton TRS itself has no means for airflow adjustment.

In order to enable airflow adjustment and measurement of airflow rate it is recommended that the diffuser be connected to the Halton TRI balancing plenum. The supply flow rate is determined by using the MSM measurement and adjustment module.

Pass the tubes and control spindle through the cone module of the diffuser.

Measure the differential pressure using a manometer. The flow rate is calculated using the formula below.

$$q_v = k * \sqrt{\Delta p_m}$$

Adjust the airflow rate by rotating the control spindle until the desired setting is achieved. Lock the damper position with a screw.

Replace the tubes and spindle in the plenum.

The k-factor for installations with different safety distances (D= duct diameter)

TRI	> 8 x D	min 3 x D
100	6.0	7.5
125	9.9	12.6
160	16.9	21.9
200	28.3	31.0
250	47.9	51.5
315	78.6	–

Servicing

Wipe the diffuser with a damp cloth.

Option with balancing plenum

Detach the diffuser from the plenum.

Remove the measurement and adjustment module by gently pulling out the shaft (NB. not the control spindle or measurement tubes!).

Wipe the parts with a damp cloth, instead of immersing in water.

Reassemble the measurement and adjustment module by pushing in the shaft back into place until the unit meets the stopper.

Reinstall the diffuser.

Specification

The diffuser is made of painted steel with a white (RAL 9003) colour.

The diffuser is made in two sections: an outer sleeve and an inner concentric cone.

The supply air pattern is selectable for wide or narrow jet by rotating the cone module.
The angle of narrow supply air pattern is adjustable.

Order code

TRS-D; CO-MO-ZT

D = Connection size
200, 250, 315, 400, 500

Other options and accessories

CO = Colour
SW White (RAL 9003)
X Special colour (RAL xxxx)

MO = Actuator type
NA Not assigned
M1 LM24A SR

ZT = Tailored product
N No
Y Yes (ETO)

Sub products

TRI Plenum
TRH Plenum

Code example

TRS-200, CO=SW, MO=NA, ZT=N