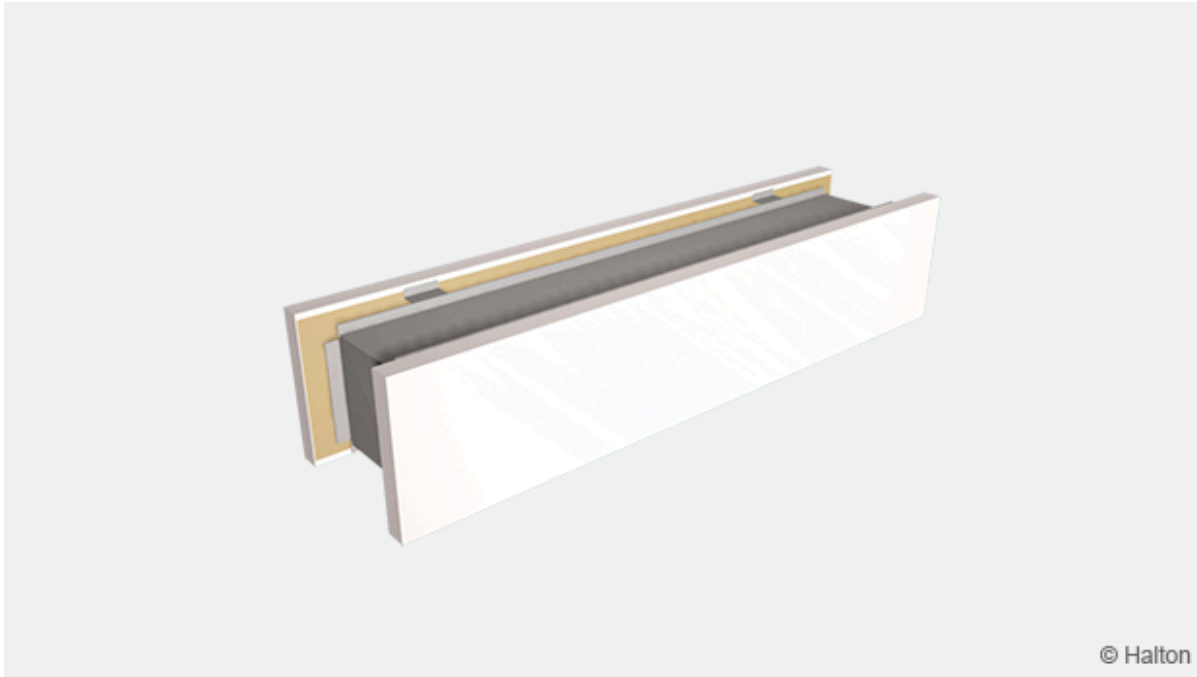


Halton TVA – Transfer unit



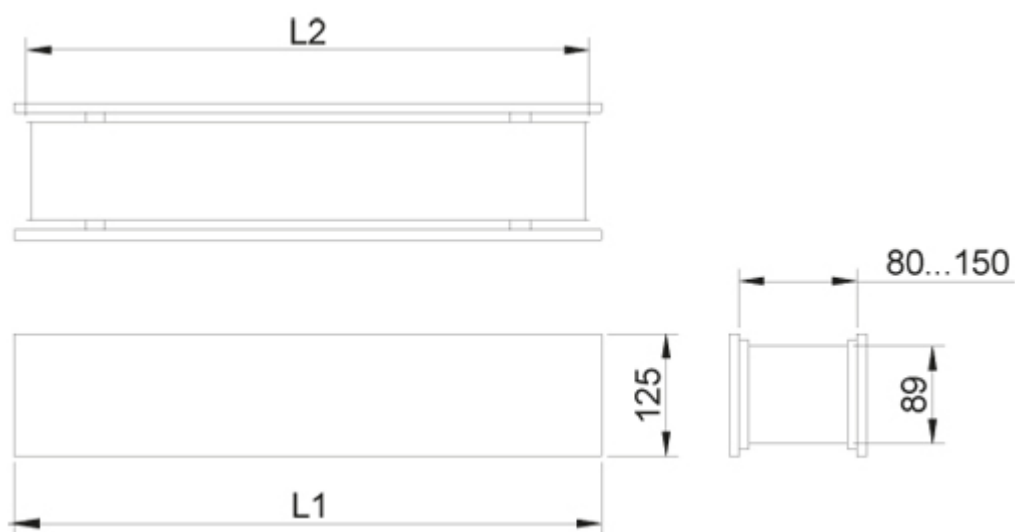
Overview

- Transfer unit for partition wall installation
- Adjustable casing depth adapts to the thickness of the wall
- Large free area, minimal pressure drop
- Detachable front panel allows cleaning of the unit
- Effective sound attenuation; reduced noise propagation between the adjacent rooms
- No visibility through the transfer unit.

Product models

- Model with front panels only

Dimensions and weight

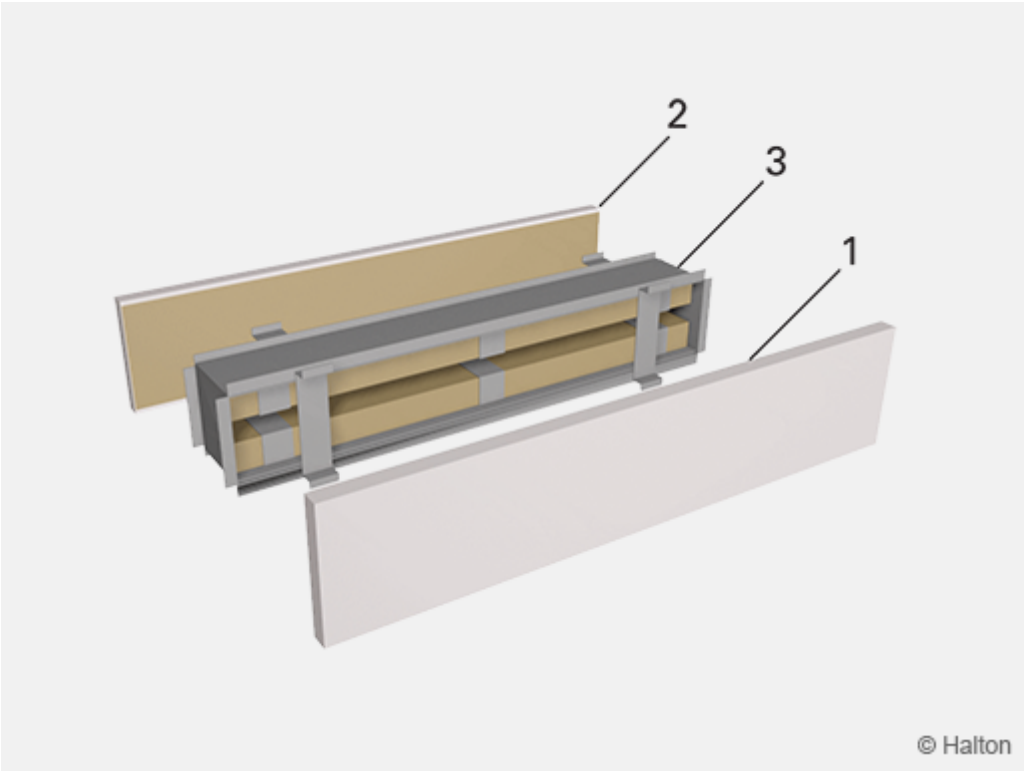


| LxH | L1 | L2 |
|----------|------|-----|
| 600×100 | 600 | 545 |
| 700×100 | 700 | 660 |
| 800×100 | 800 | 760 |
| 900×100 | 900 | 860 |
| 1000×100 | 1000 | 960 |

Weight (kg)

| LxH | TVA/N | TVA/B |
|----------|-------|-------|
| 600×100 | 3.53 | 1.51 |
| 700×100 | 4.12 | 1.67 |
| 800×100 | 4.71 | 1.87 |
| 900×100 | 5.11 | 2.07 |
| 1000×100 | 5.63 | 2.40 |

Material

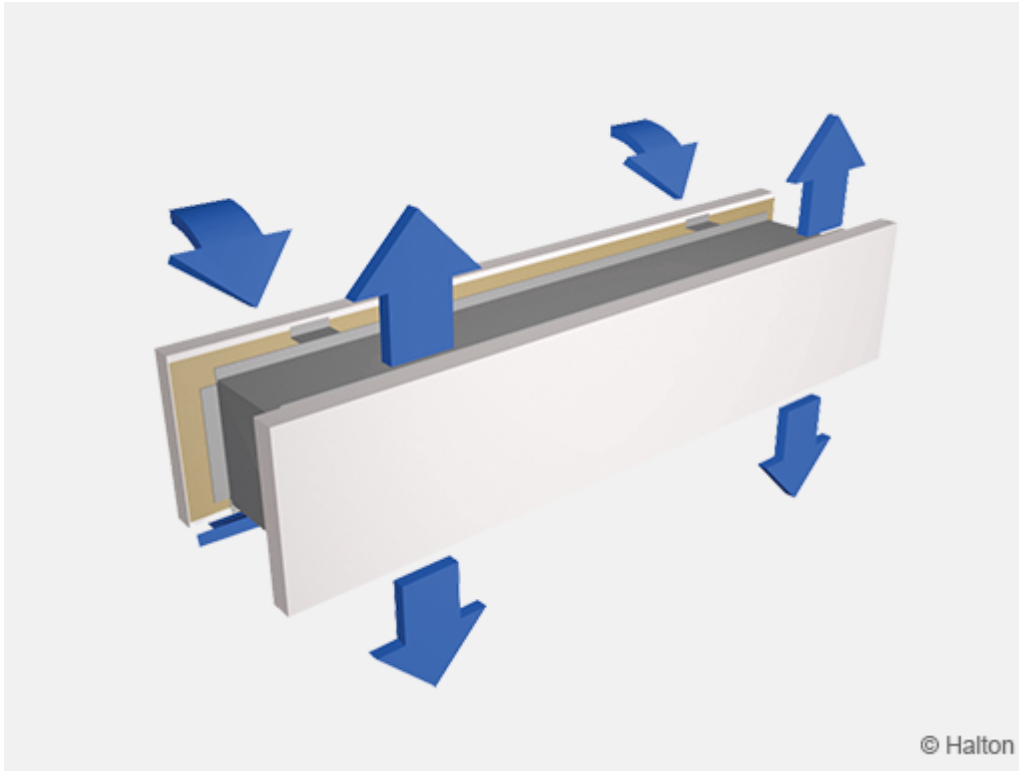


| Part | Material | Note |
|----------------------|---|------------------------------|
| Casing (3) | Galvanised steel | – |
| Front panel (1, 2) | Galvanised steel | – |
| Attenuation material | Mineral wool | – |
| Finishing | Front panels epoxy-painted/ White (RAL 9003/30%) | Special colours available |

Product models

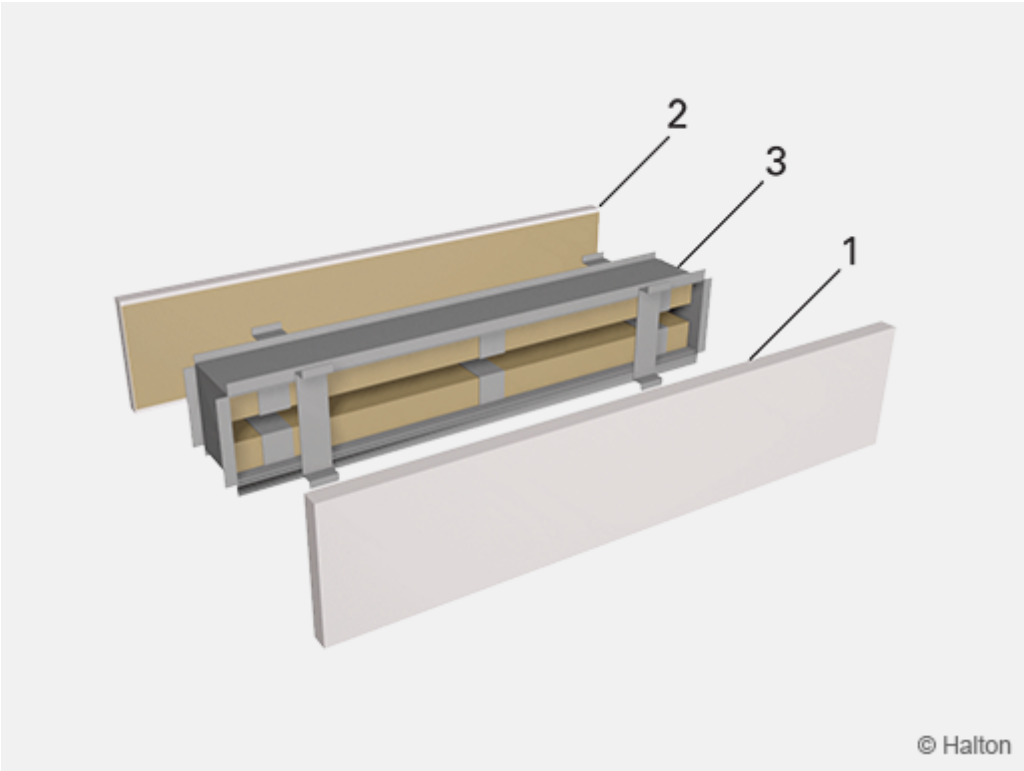
- Halton TVA/N: complete unit with 2 front panels and attenuation casing
- Halton TVA/B: front panels without casing, when less sound attenuation are required

Function



Air moves to adjoining rooms through the transfer unit due to pressure difference.
The transfer unit attenuates sound and reduces air-borne noise between rooms.
The transfer unit distributes air evenly in different directions.
The transfer unit prevents vision from room to room.

Installation



- Code description**
- 1, 2 Front panels
 - 3. Casing

The transfer unit is installed in an opening made in a wall.

The dimensions for installation hole are:

| Description | TVA/N | TVA/B |
|-------------------|----------------|------------------------|
| Installation hole | (L2+5) x 95 mm | (L2+5) x (30... 60) mm |
| Wall thickness | 80...150 mm | unlimited |

Servicing

Detach the front panels for cleaning.
Clean the unit using a vacuum cleaner.
Wipe the front panels with a damp cloth instead of immersing into water.

Specification

The transfer unit has a sound attenuating casing and two exposed front panels with side openings.

The transfer unit is manufactured from galvanised steel with a white (RAL 9003) colour.
Sound attenuation material is coated mineral wool.
The depth of the casing is adjustable according to the thickness of the wall.

Option

The transfer unit can have two exposed front panels without casing.

Order code

TVA/S-W-H; CO-ZT

S = Construction

N Standard (front panels + casing)

B Front panels without casing

W = Width (mm)

300, 400, 500, 600, 700, 800, 900, 1000

H = Height (mm)

100

Other options and accessories

CO = Colour

SW Signal white (RAL 9003)

X Special colour (RAL xxxx)

ZT = Tailored product

N No

Y Yes (ETO)

Code example

TVA/N-600-100, CO=SW, ZT=N