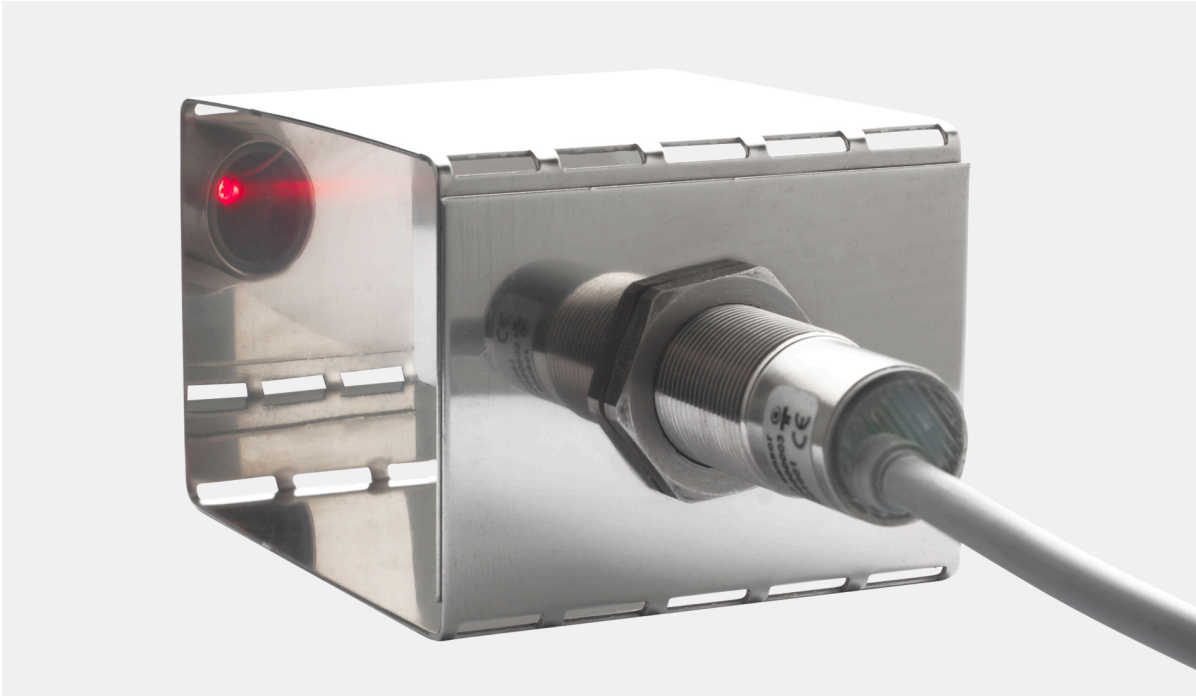


KGS – Kitchen grease duct safety control system (ETL)



Overview

- Monitors grease deposit levels in all ductwork.
- Mitigates hygiene and fire safety concerns.
- Allows operator to clean ductwork when required by grease deposit levels, not dictated by schedule.
- Compatible with new or existing exhaust ductwork.
- Optical grease sensing device not affected by ambient light.
- Up to 10 grease sensors per system (extendable).
- Operates as a “stand alone” system.
- Grease sensor and reflector assemblies are UL1978 listed. Control panels are ETL listed.

Principles of operation

A – Master control panel

B – Slave control panel

Design principles applied on hoods. Two areas managed by one Master Control Panel combined with one Slave Control Panel.

